

# Under the Sea Mittens – by Kathy Lewinski

## Clue 1

**Size:** Medium – 7.5” wide by 7” or 7.5” long

### Abbreviations:

k - knit

p – purl

yo – yarn over

k2tog – knit two together

Follow the written pattern for shaping and the chart for the color pattern.

The pattern is written with a hemmed cuff. Hemmed cuffs do not have as much stretchiness as a ribbed cuff. If you prefer using ribbing, work in ribbing until row 19, then knit row 20 and start colorwork on row 21.

I have quite thin wrists and hands, so I did the whole cuff on the smaller needles. Some people find this too tight to get over their hands. You may find this type of hemmed cuff fits you better if you switch to the bigger needles on row 5.

With main color and needles a size smaller than the needles you are using for the rest of the mittens, cast on 72 stitches. Divide between three needles. Join together to knit in the round placing a stitch marker between the first and last stitch to mark rows.

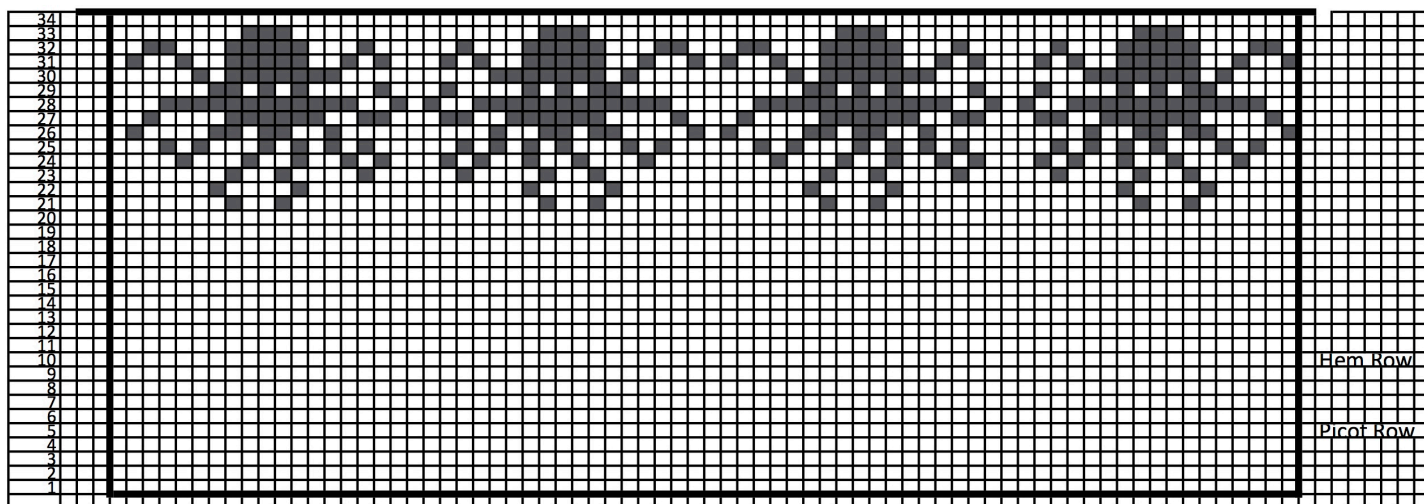
Row 1 - 4: k

Row 5: Switch to bigger needles if you wish (yo, k2tog, k2)18x

Row 6 - 9: k

Row 10 (hem row): Fold rows 1 – 4 towards the inside at row 5. Knit each stitch on the needle together with the edge loop of the corresponding cast-on stitch.

Row 11 – 34: k (start colorwork on row 21)



Copyright 2017 Kathy Lewinski JustCraftyEnough.com

Do not duplicate for distribution, repost, sell or teach this pattern or chart without permission