

Pride and Prejudice Mittens

by Kathy Lewinski



Supplies:

- 45.5g/400.5yds lace weight yarn (I used Knit Picks Alpaca Cloud, 29.8g/262.25yds Hugh and 15.7g/138.16yds Daisy)
- Four size 000 double pointed needles (or size needed to get gauge)
- Four size 0000 double pointed needles
- Scrap lace weight yarn
- Tapestry needle

Gauge: 15 stitches and 17 rows per inch. It is important to get gauge to get the stated size.

Size: 7.5 " around and 8" long with a 2" cuff

Abbreviations:

K – knit

P – purl

K2tog – knit two stitches together

Yo – yarn over

Kfb – knit into the front and back of the same stitch

Ssk – slip, slip, knit

Cuff:

With 0000 needles, cast on 94 stitches. Join together to knit in the round being careful not to twist the stitches.

Row 1 – 4: k

Row 5 (turning row): (k2tog, yo)47x

Row 6 – 9: k

Row 10: Turn the first four rows to the inside at the turning row. Knit catching the matching stitch of the cast on row with each stitch to create the picot hemmed edge.

Switch to 000 needles.

Row 11: k4, kfb, k5, kfb, k5, kfb, k5, kfb, k5, kfb, k5, kfb, k5, kfb, k5, kfb, k4, kfb, k5, kfb, k5, kfb, k5, kfb, k5, kfb, k5, kfb, k5, kfb (110 stitches)

Row 12 – 38: k

Hand:

Row 39: Left hand: k54, kfb, k54, kfb (112 stitches)

Right hand: kfb, k54, kfb, k54 (112 stitches)

Row 40 – 83: k

Row 84: On this row you will add the waste stitches for the after thought/peasant thumb.

Left hand: k25, knit the next 24 stitches with scrap yarn, move the 24 stitches you just knit back on to the left needle, reknit them with the working yarn following the color chart, k63

Right hand: k64, knit the next 24 stitches with scrap yarn, move the 24 stitches you just knit back on to the left needle, reknit them with the working yarn following the color chart, k24

Row 85 – 148: k

Row 149: k1, ssk, k51, k2tog, k1, ssk, k51, k2tog (108 stitches)

Row 150: k1, ssk, k49, k2tog, k1, ssk, k49, k2tog (104 stitches)

Row 151: k1, ssk, k47, k2tog, k1, ssk, k47, k2tog (100 stitches)

Row 152: k1, ssk, k45, k2tog, k1, ssk, k45, k2tog (96 stitches)

Row 153: k1, ssk, k43, k2tog, k1, ssk, k43, k2tog (92 stitches)

Row 154: k1, ssk, k41, k2tog, k1, ssk, k41, k2tog (88 stitches)

Row 155: k1, ssk, k39, k2tog, k1, ssk, k39, k2tog (84 stitches)

Row 156: k1, ssk, k37, k2tog, k1, ssk, k37, k2tog (80 stitches)

Row 157: k1, ssk, k35, k2tog, k1, ssk, k35, k2tog (76 stitches)

Row 158: k1, ssk, k33, k2tog, k1, ssk, k33, k2tog (72 stitches)

Row 159: k1, ssk, k31, k2tog, k1, ssk, k31, k2tog (68 stitches)

Row 160: k1, ssk, k29, k2tog, k1, ssk, k29, k2tog (64 stitches)

Row 161: k1, ssk, k27, k2tog, k1, ssk, k27, k2tog (60 stitches)

Row 162: k1, ssk, k25, k2tog, k1, ssk, k25, k2tog (56 stitches)

Row 163: k1, ssk, k23, k2tog, k1, ssk, k23, k2tog (52 stitches)

Row 164: k1, ssk, k21, k2tog, k1, ssk, k21, k2tog (48 stitches)

Row 165: k1, ssk, k19, k2tog, k1, ssk, k19, k2tog (44 stitches)

Row 166: k1, ssk, k17, k2tog, k1, ssk, k17, k2tog (40 stitches)

Row 167: k1, ssk, k15, k2tog, k1, ssk, k15, k2tog (36 stitches)

Row 168: k1, ssk, k13, k2tog, k1, ssk, k13, k2tog (32 stitches)

Row 169: k1, ssk, k11, k2tog, k1, ssk, k11, k2tog (28 stitches)

Row 170: k1, ssk, k9, k2tog, k1, ssk, k9, k2tog (24 stitches)

Row 171: k1, ssk, k7, k2tog, k1, ssk, k7, k2tog (20 stitches)

Row 172: k1, ssk, k5, k2tog, k1, ssk, k5, k2tog (16 stitches)

Row 173: k1, ssk, k3, k2tog, k1, ssk, k3, k2tog (12 stitches)

Row 174: k1, ssk, k1, k2tog, k1, ssk, k1, k2tog (8 stitches)

Cut yarn leaving a tail. Either weave in through all the remaining stitches and pull tight or seam with Kitchener stitch.

Thumb:

You will be adding a stitch on both sides of the thumb between the upper and lower stitches. I like to do this by picking up two stitches and knitting them together. I find this prevents there from being too big of a hole on either side. If you prefer just pick up one stitch on each side.

Put the 24 stitches below the waste yarn and 24 stitches above the waste yarn onto two needles. Carefully remove the waste yarn. Divide the stitches between three needles.

Row 84:

Left Thumb: starting with the bottom 24 stitches, k24, pick up two stitches from the hand of the mitten and knit them together, k24, pick up two stitches from the hand and knit them together. Place stitch marker to mark rows. (50 stitches)

Right Thumb: pick up and knit two stitches together from the hand of the mitten between the upper and lower 24, k24, pick up two stitches from the hand of the mitten and knit them together, k24. Place stitch marker to mark rows. (50 stitches)

Row 85 – 118: k
Row 119: ssk, k21, k2tog, ssk, k21, k2tog (46 stitches)
Row 120: ssk, k19, k2tog, ssk, k19, k2tog (42 stitches)
Row 121: ssk, k17, k2tog, ssk, k17, k2tog (38 stitches)
Row 122: ssk, k15, k2tog, ssk, k15, k2tog (34 stitches)
Row 123: ssk, k13, k2tog, ssk, k13, k2tog (30 stitches)
Row 124: ssk, k11, k2tog, ssk, k11, k2tog (26 stitches)
Row 125: ssk, k9, k2tog, ssk, k9, k2tog (22 stitches)
Row 126: ssk, k7, k2tog, ssk, k7, k2tog (18 stitches)
Row 127: ssk, k5, k2tog, ssk, k5, k2tog (14 stitches)
Row 128: ssk, k3, k2tog, ssk, k3, k2tog (10 stitches)

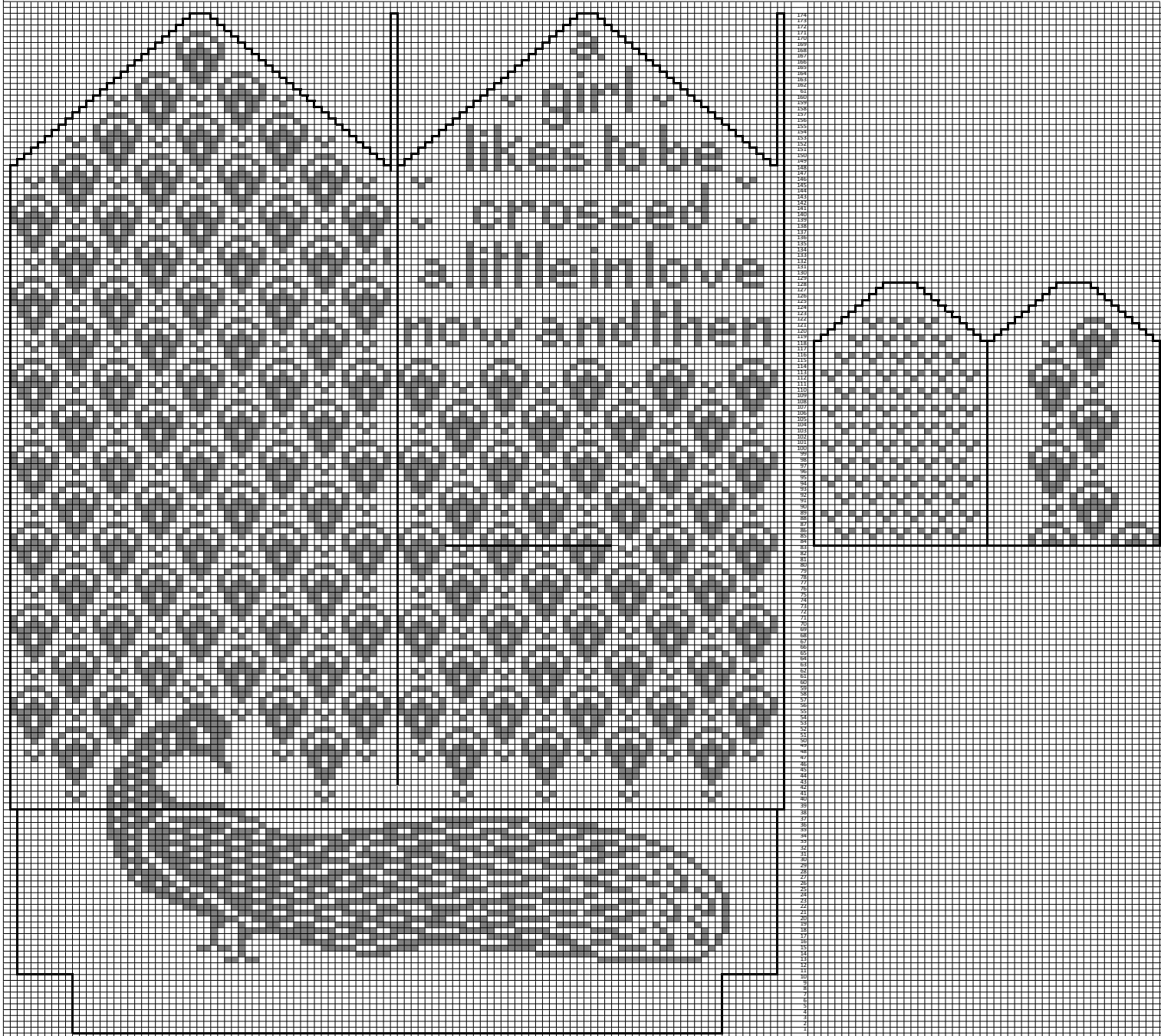
Cut yarn leaving a tail. Either weave in through all the remaining stitches and pull tight or seam with Kitchener stitch.

Weave in ends and block

Copyright 2016 Kathy Lewinski JustCraftyEnough.com

Do not duplicate for distribution, repost PDF for download, repost, sell or teach without permission.

Pride and Prejudice Mittens by Kathy Lewinski Left Hand



Pride and Prejudice Mittens by Kathy Lewinski Right Hand

