



Yarn Ends Mittens

by Kathy Lewinski

Size: Small: 7.2" wide x 7.25" long [Medium: 7.6" wide x 7.6" long] Both sizes have a 2" long cuff

It is important to get gauge to get the stated size.

If you would like a bigger mitten knit the small size at a gauge of 9 stitches and 11 rows per inch. You will get a mitten that is about 8" wide and 8" long.

The length of any size mitten can be shortened by starting the decreases earlier. I start my decreases at the top of my baby finger.

Gauge: 10 stitches and 12 rows per inch (It is important to get gauge to get the stated size.)

Supplies:

- 284yds/62g fingering weight yarn, 149yds/32g for MC and approx. 12yds/2.6g each 8 other colors and 13yrd/3g each 3 other colors (these are the ones that will also be use on the thumb) or a total of 135yds/29.8g of contrasting colors. I used Knit Picks Palette in Black for my MC and then in order, Serrano, Semolina, Cyan, Green Tea Heather, Kumquat Heather, Rouge, Clover, Custard, Currant, Pool, and Serrano again. (Amounts are based on medium size)
- Four size 1 double-pointed needles or size needed to get gauge
- Four size 0 double-pointed needles or a size smaller than the needles you are using to get gauge.
- Stitch marker
- Scrap fingering yarn
- Tapestry needle

Abbreviations:

k – knit

p – purl

ssk – slip, slip, knit

k2tog – knit two stitches together

m1 – make one stitch, direction doesn't matter

Follow the written pattern for shaping and the chart for color work. The chart is in black and white because I did not want to confuse you with my colors. I have added thicker lines to show you where I changed colors. You may find it helpful to print the chart and color in the design with colored pencils similar to the colors of yarn you are using.

Picot Hemmed Edge:

With smaller needles, cast on 63 stitches. Divide between three needles and join together to knit in the round. Place a stitch marker between the first and last stitch to mark rows.

Row 1 – 4: k

Row 5: (k2tog, yo, k1)21x

Row 6 – 9: k

Row 10: Fold the first four rows to the inside. K this row catching the coordinating cast-on stitch with each stitch on the needles and knitting them together to create the hem.

Cuff:

Row 11: change to bigger needle k63, m1 (64 stitches)

Row 12 – 29: k

Hand: Instructions are for small size are first with instructions for medium size, if different are in brackets [].

Row 30: (k8, m1)8x (72 stitches) [(k5, m1, k5, m1, k6, m1)4x (76 stitches)]

Row 31 – 59 [31 - 62]: k

Row 60 [63]: Follow the instructions for the appropriate hand.

(A note about thumb placement: I like my thumb about ½” in from the edge, so that is how this pattern has been written. Some people prefer it right at the edge. You can easily move it by changing where you put the waste stitches.)

Right hand: k41[43], knit the next 15 stitches with a piece of scrap yarn, place those 15 stitches back on the left needle and reknit them with working yarn following the color pattern, k16 [18]

Left hand: k52 [56], knit the next 15 stitches with a piece of scrap yarn, place those 15 stitches back on the left needle and reknit them with working yarn following the color pattern, k5.

Row 61 – 101 [64 – 105]: k

Row 102 [106]: ssk, k32 [34], k2tog, ssk, k32 [34], k2tog (68 [72] stitches)

Row 103 [107]: k

Row 104 [108]: ssk, k30 [32], k2tog, ssk, k30 [32], k2tog (64 [68] stitches)

Row 105 [109]: k

Row 106 [110]: ssk, k28 [30], k2tog, ssk, k28 [30], k2tog (60 [64] stitches)

Row 107 [111]: ssk, k26 [28], k2tog, ssk, k26 [28], k2tog (56 [60] stitches)

Row 108 [112]: ssk, k24 [26], k2tog, ssk, k24 [26], k2tog (52 [56] stitches)

Row 109 [113]: ssk, k22 [24], k2tog, ssk, k22 [24], k2tog (48 [52] stitches)

Row 110 [114]: ssk, k20 [22], k2tog, ssk, k20 [22], k2tog (44 [48] stitches)

Row 111 [115]: ssk, k18 [20], k2tog, ssk, k18 [20], k2tog (40 [44] stitches)

Row 112 [116]: ssk, k16 [18], k2tog, ssk, k16 [18], k2tog (36 [40] stitches)

Row 113 [117]: ssk, k14 [16], k2tog, ssk, k14 [16], k2tog (32 [36] stitches)

Row 114 [118]: ssk, k12 [14], k2tog, ssk, k12 [14], k2tog (28 [32] stitches)

Row 115 [119]: ssk, k10 [12], k2tog, ssk, k10 [12], k2tog (24 [28] stitches)

Medium only:

[Row 120: ssk, k10, k2tog, ssk, k10, k2tog (24 stitches)]

All sizes:

Put the front 12 stitches on one needle and the second 12 on another. Cut yarn leaving at least a 12” tail. Seam using Kitchener stitch.

Thumb:

I chart for a thumb that is about 2 ½” long after it divides from the hand. If you need a longer or shorter thumb, start your decreases about ½” from the top of your thumb.

Carefully put the 15 stitches above and the 15 stitches below the waste yarn on needles. Remove the waste yarn.

Row 60 [63]: Start at the bottom right side of the thumb. With needle #1, K10. With needle #2, k5, pick up 2 stitches from the hand of the mitten and knit them together, k5. With needle #3 k10, pick up 2 stitches from the hand of the mitten and knit them together. Place stitch marker to mark rows. (32 stitches)

Row 61 – 82 [64 – 87]: k

Row 83 [88]: ssk, k12, k2tog, ssk, k12, k2tog (28 stitches)

Row 84 [89]: ssk, k10, k2tog, ssk, k10, k2tog (24 stitches)

Row 85 [90]: ssk, k8, k2tog, ssk, k8, k2tog (20 stitches)

Row 86 [91]: ssk, k6, k2tog, ssk, k6, k2tog (16 stitches)

Row 87 [92]: ssk, k4, k2tog, ssk, k4, k2tog (12 stitches)

Row 88 [93]: ssk, k2, k2tog, ssk, k2, k2tog (8 stitches)

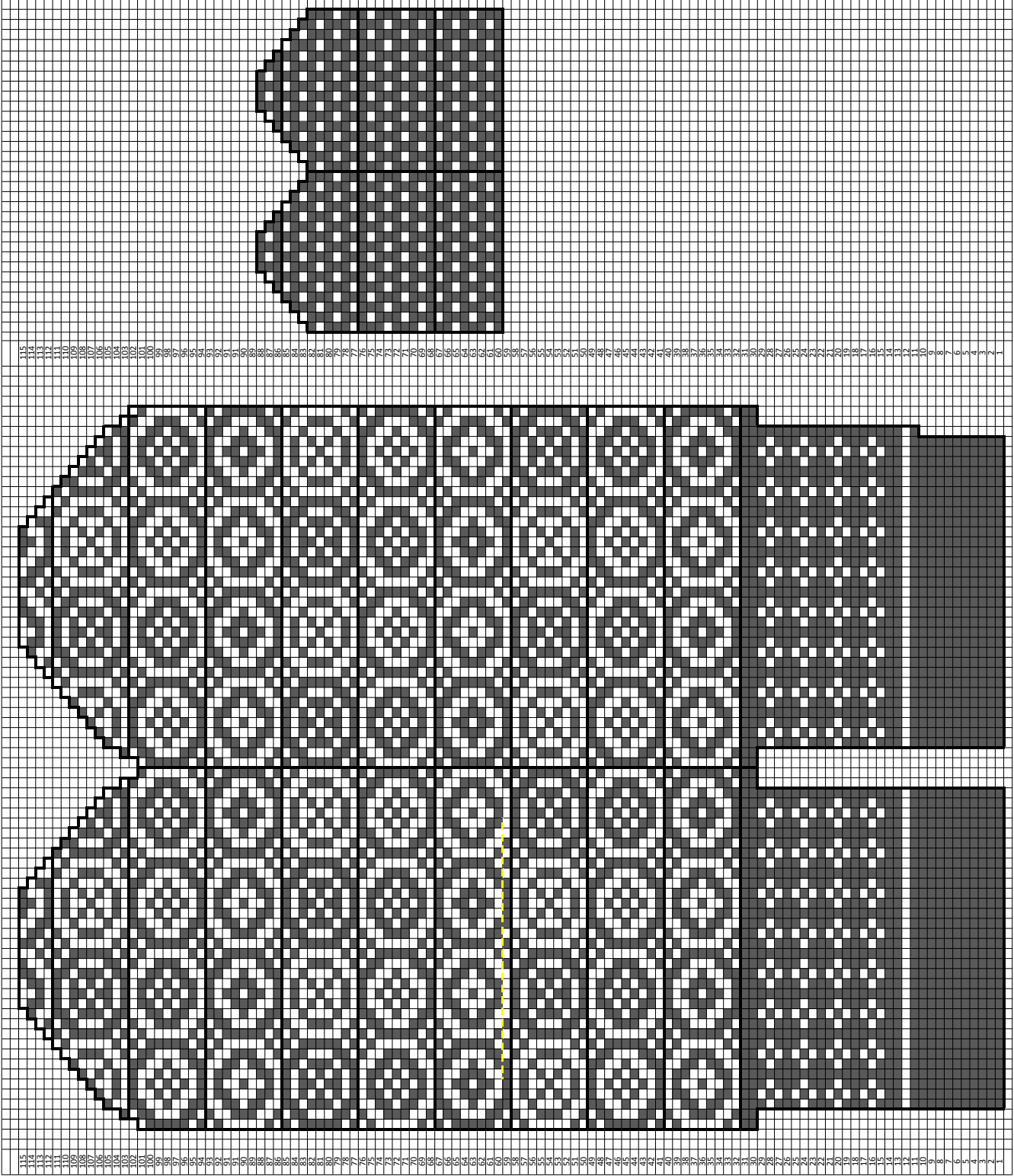
Put the front 4 stitches on one needle and the back 4 on another. Cut yarn leaving at least a 8" tail. Seam using Kitchener stitch.

Weave in ends.

Copyright 2016 Kathy Lewinski JustCraftyEnough.com

Do not duplicate for distribution, repost, make available for download, sell or teach this pattern or chart without permission.

Yarn Ends Mittens Small by Kathy Lewinski



Yarn Ends Mittens Medium by Kathy Lewinski

