

Winter Snows Mittens – by Kathy Lewinski

Clue 4

Size: Small – 7” wide by 7” (or 6 1/2”) long

Abbreviations:

k - knit

p – purl

m1 – make one, direction does not matter

ssk – slip, slip, knit

k2tog – knit two together

Follow the written pattern for shaping and the chart for the color pattern.

Follow the written pattern for shaping and the chart for the color pattern. Make sure to follow the chart for the correct thumb.

Carefully remove the waste yarn and place the 30 on three needles, placing a stitch marker between the top and bottom stitches on the right side to mark rows.

Row 1: k15, pick up two stitches from the hand of the mitten and knit them together, k15, pick up 2 stitches from the hand of the mitten and knit them together. (32 stitches)

Row 2 – 26 (or until middle of thumbnail): k

Row 27: ssk, k12, k2tog, ssk, k12, k2tog (28 stitches)

Row 28: ssk, k10, k2tog, ssk, k10 k2tog (24 stitches)

Row 29: ssk, k8, k2tog, ssk, k8, k2tog (20 stitches)

Row 30: ssk, k6, k2tog, ssk, k6, k2tog (16 stitches)

Row 31: ssk, k4, k2tog, ssk, k4, k2tog (12 stitches)

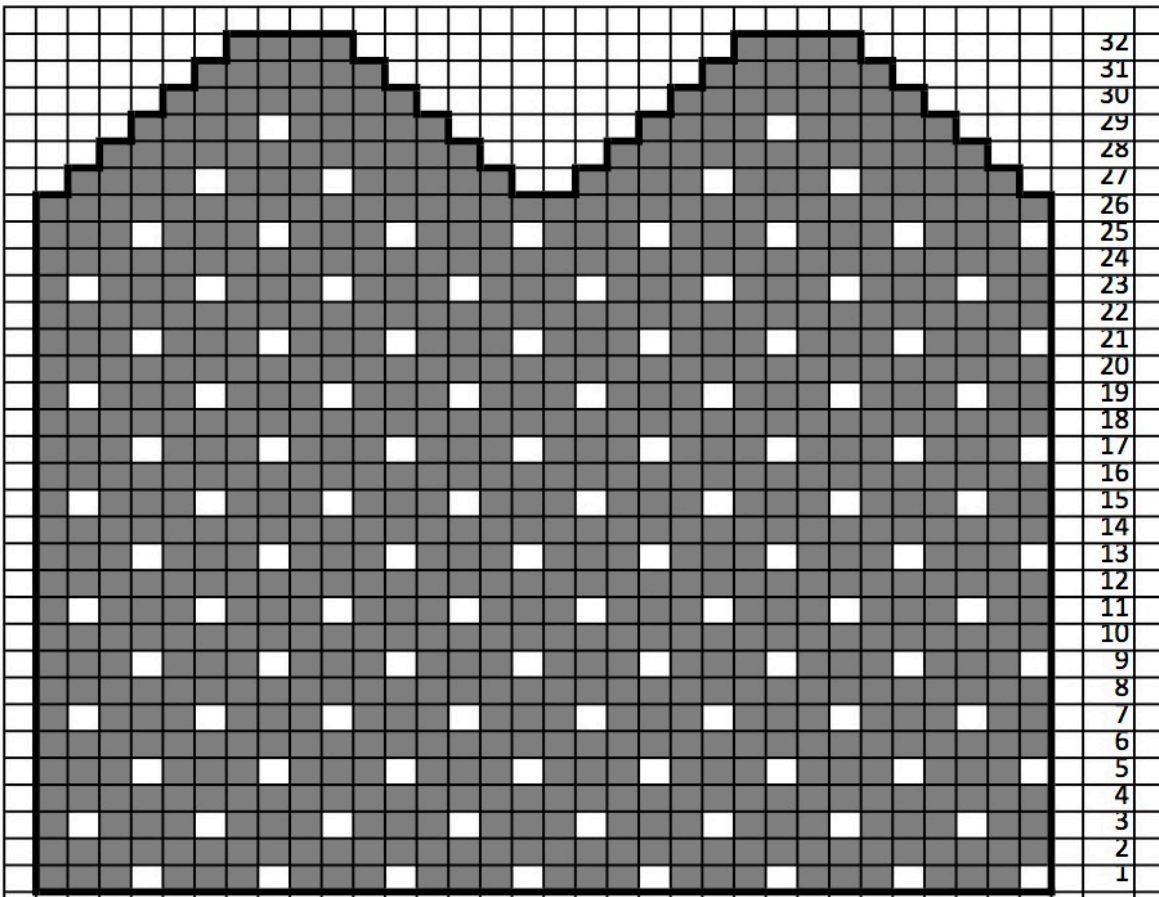
Row 32: ssk, k2, k2tog, ssk, k2, k2tog (8 stitches)

Put the first four stitches on one needle and the second four on another. Seam together using Kitchener stitch.

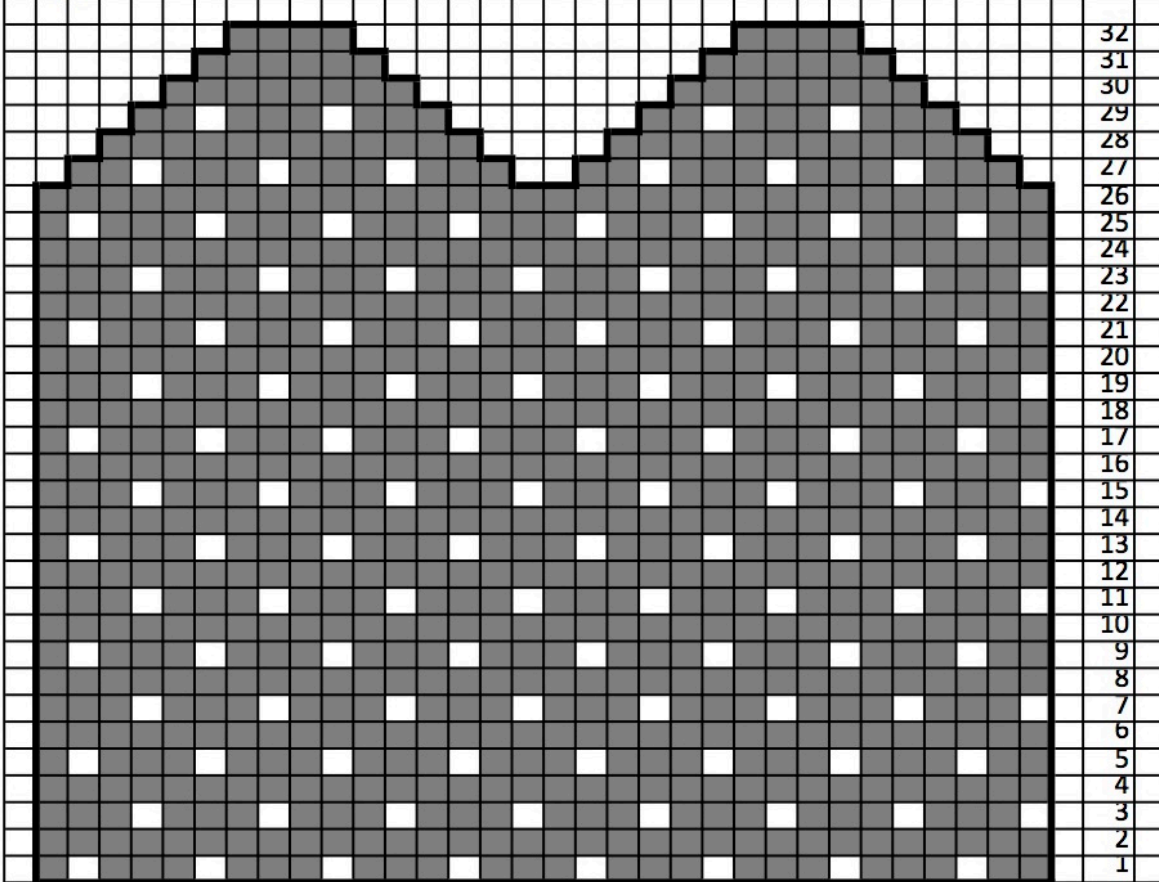
Weave in ends and block.

Copyright 2016 Kathy Lewinski JustCraftyEnough.com

Do not duplicate for distribution, repost, make available for download, sell or teach this pattern or chart without permission.



Right Thumb



Left Thumb