

# Winter Snows Mittens – by Kathy Lewinski

## Clue 4

**Size:** Medium – 7.5” wide by 7.5” (or 7”) long

### **Abbreviations:**

k - knit

p – purl

m1 – make one, direction does not matter

ssk – slip, slip, knit

k2tog – knit two together

Follow the written pattern for shaping and the chart for the color pattern.

Carefully remove the waste yarn and place the 30 on three needles, placing a stitch marker between the top and bottom stitches on the right side to mark rows.

Row 1: k15, pick up two stitches from the hand of the mitten and knit them together, k15, pick up 2 stitches from the hand of the mitten and knit them together. (32 stitches)

Row 2 – 27 (or until middle of thumbnail): k

Row 28: ssk, k12, k2tog, ssk, k12, k2tog (28 stitches)

Row 29: ssk, k10, k2tog, ssk, k10 k2tog (24 stitches)

Row 30: ssk, k8, k2tog, ssk, k8, k2tog (20 stitches)

Row 31: ssk, k6, k2tog, ssk, k6, k2tog (16 stitches)

Row 32: ssk, k4, k2tog, ssk, k4, k2tog (12 stitches)

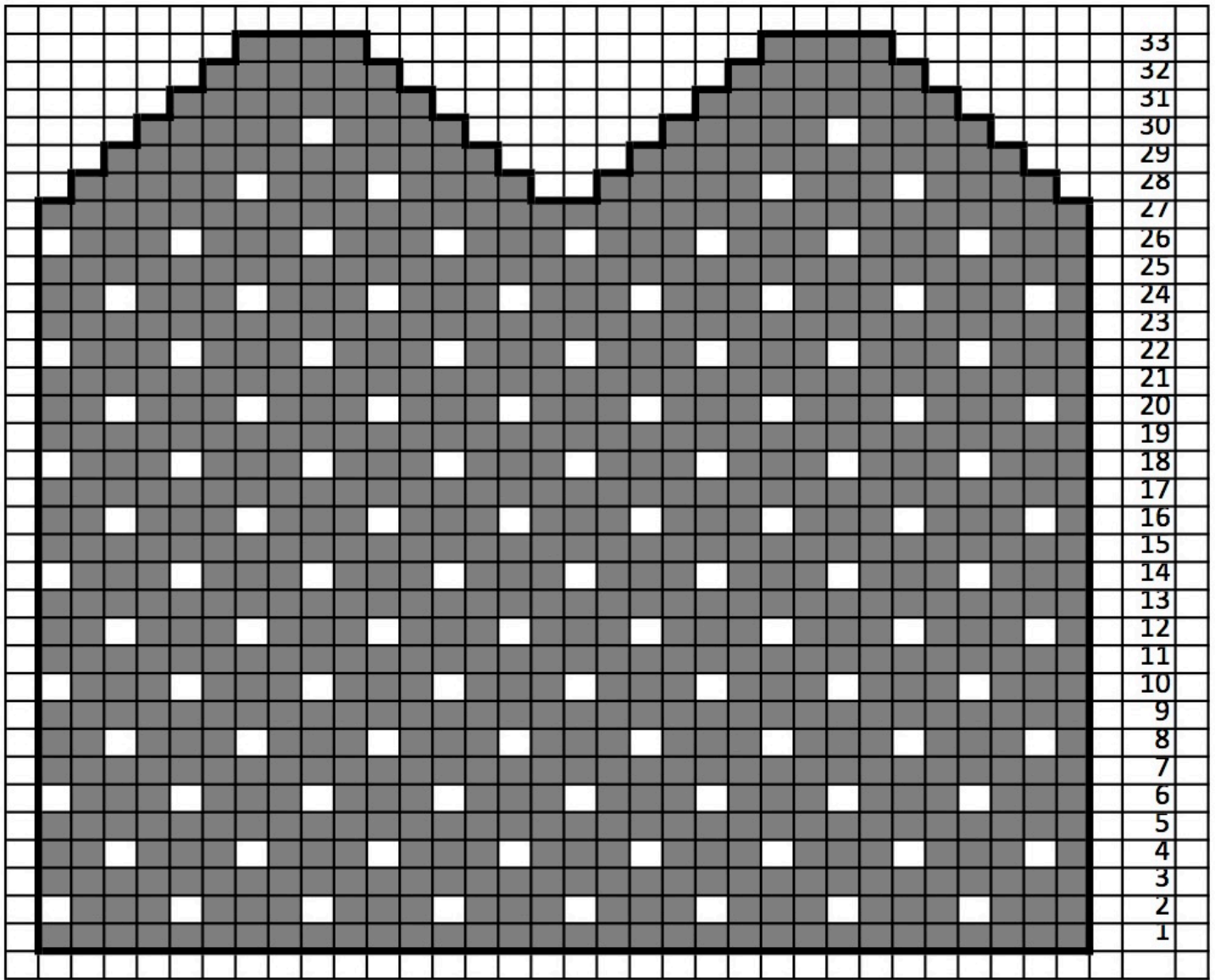
Row 33: ssk, k2, k2tog, ssk, k2, k2tog (8 stitches)

Put the first four stitches on one needle and the second four on another. Seam together using Kitchener stitch.

Weave in ends and block.

Copyright 2016 Kathy Lewinski JustCraftyEnough.com

Do not duplicate for distribution, repost, make available for download, sell or teach this pattern or chart without permission



Copyright 2016 Kathy Lewinski JustCraftyEnough.com

Do not duplicate for distribution, repost, make available for download, sell or teach this pattern or chart without permission.