

Winter Snows Mittens – by Kathy Lewinski

Clue 2

Size: Medium – 7.5” wide by 7.5” (or 7.25”) long

Abbreviations:

k - knit

p – purl

m1 – make one, direction does not matter

Follow the written pattern for shaping and the chart for the color pattern.

Row 36 – 55: k

Row 56: (Right mitten) k42, k15 onto scrap yarn, move those 15 stitches back to the left needle, k32 with working yarn

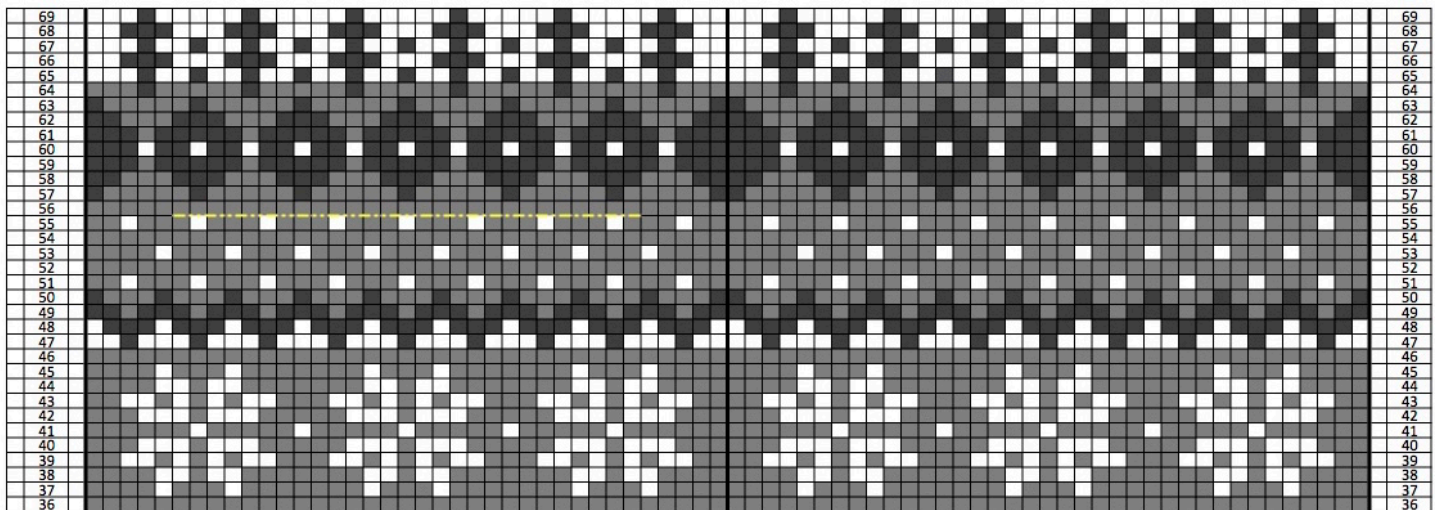
Row 56: (Left mitten) k54, k15 onto scrap yarn, move those 15 stitches back to the left needle, k20 with working yarn

Alternative thumb placement:

Row 56: (Right mitten) k38, k15 onto scrap yarn, move those 15 stitches back to the left needle, k36 with working yarn

Row 56: (Left mitten) k58, k15 onto scrap yarn, move those 15 stitches back to the left needle, k16 with working yarn

Row 57 – 69: k



Copyright 2016 Kathy Lewinski JustCraftyEnough.com

Do not duplicate for distribution, repost, make available for download, sell or teach this pattern or chart without permission.