

Winter Snows Mittens – by Kathy Lewinski

Clue 1

Size: Medium – 7.5” wide by 7.5” (or 7.25”) long

Abbreviations:

- k - knit
- p – purl
- m1 – make one, direction does not matter

Follow the written pattern for shaping and the chart for the color pattern.

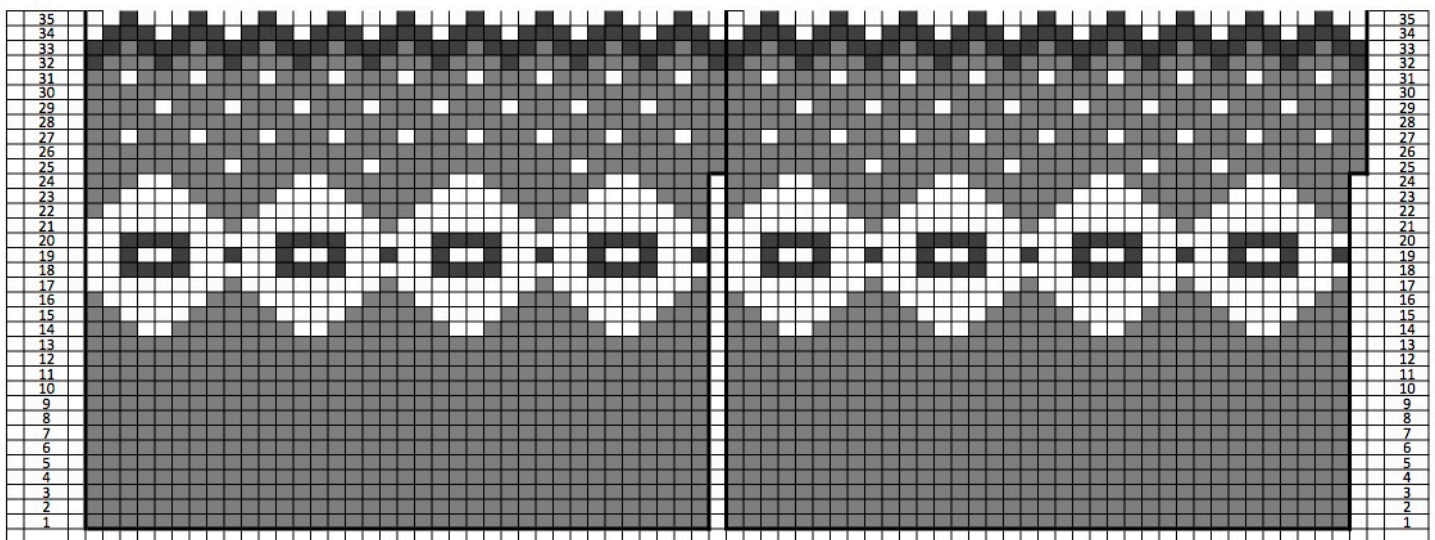
With main color, cast on 72 stitches. Divide between three needles. Join together to knit in the round placing a stitch marker between the first and last stitch to mark rows.

Row 1 - 12: *k1, p1, repeat from * until end of row (If you would like a cuff that is longer than 2”, work more rows of ribbing before starting row 13.)

Row 13 - 24: k

Row 25: m1, k36, m1, k36 (74 stitches)

Row 26 – 35: k



Copyright 2016 Kathy Lewinski JustCraftyEnough.com
Do not duplicate for distribution, repost, sell or teach this pattern or chart without permission