

Winter Snows Mittens – by Kathy Lewinski

Clue 4

Size: Large – 8” wide by 8” (or 7.5”) long

Abbreviations:

k - knit

p – purl

m1 – make one, direction does not matter

ssk – slip slip knit

k2tog – knit two together

Follow the written pattern for shaping and the chart for the color pattern. Make sure to follow the chart for the correct thumb.

Carefully remove the waste yarn and place the 32 on three needles, placing a stitch marker between the top and bottom stitches on the right side to mark rows.

Row 1: k16, pick up two stitches from the hand of the mitten and knit them together, k16, pick up 2 stitches from the hand of the mitten and knit them together. (34 stitches)

Row 2 – 34 (or until middle of thumbnail): k

Row 35: ssk, k13, k2tog, ssk, k13, k2tog (30 stitches)

Row 36: ssk, k11, k2tog, ssk, k11 k2tog (26 stitches)

Row 37: ssk, k9, k2tog, ssk, k9, k2tog (22 stitches)

Row 38: ssk, k7, k2tog, ssk, k7, k2tog (18 stitches)

Row 39: ssk, k5, k2tog, ssk, k5, k2tog (14 stitches)

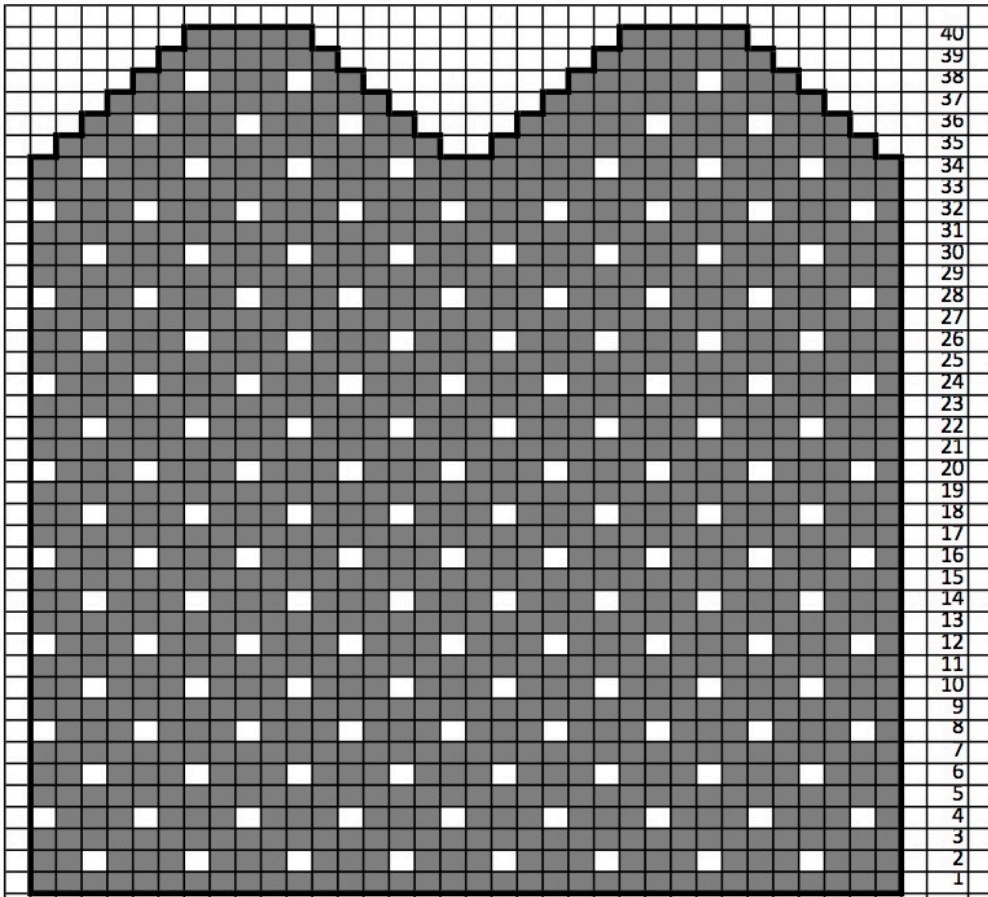
Row 40: ssk, k3, k2tog, ssk, k3, k2tog (10 stitches)

Put the first five stitches on one needle and the second five on another. Seam together using Kitchener stitch.

Weave in ends and block.

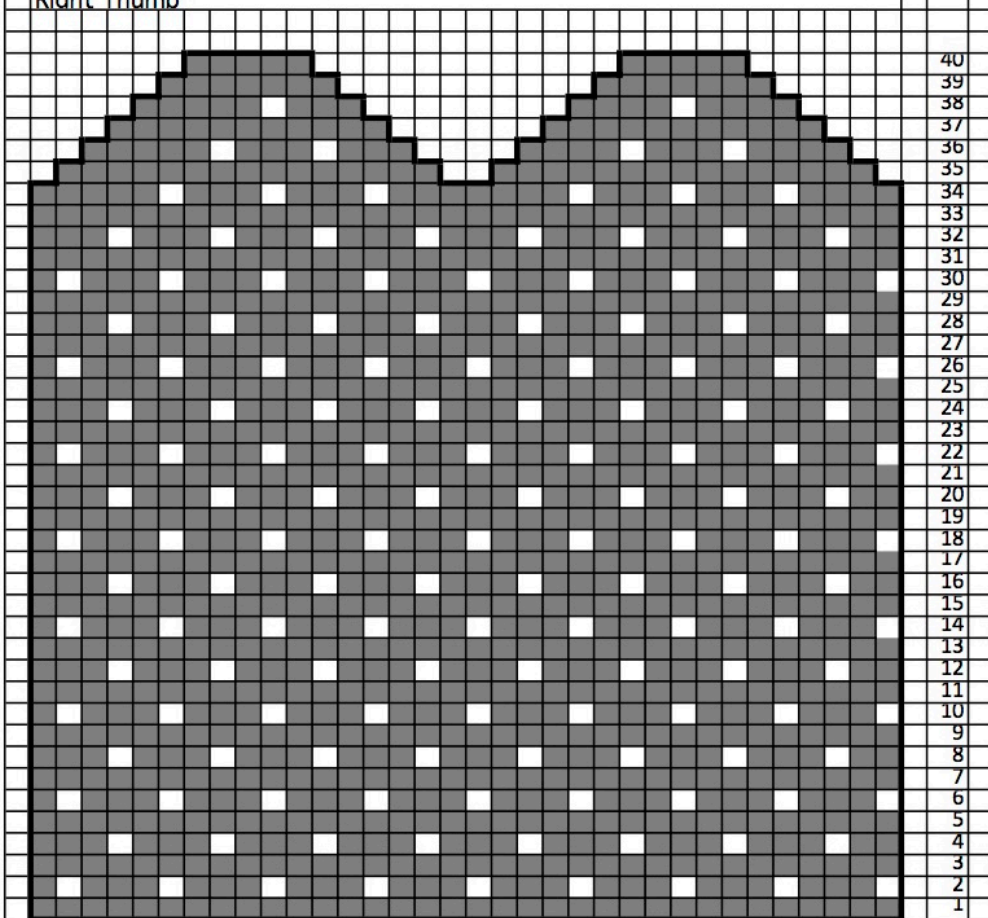
Copyright 2016 Kathy Lewinski JustCraftyEnough.com

Do not duplicate for distribution, repost, make available for download, sell or teach this pattern or chart without permission.



40
39
38
37
36
35
34
33
32
31
30
29
28
27
26
25
24
23
22
21
20
19
18
17
16
15
14
13
12
11
10
9
8
7
6
5
4
3
2
1

Right Thumb



40
39
38
37
36
35
34
33
32
31
30
29
28
27
26
25
24
23
22
21
20
19
18
17
16
15
14
13
12
11
10
9
8
7
6
5
4
3
2
1

Left Thumb