

Winter Snows Mittens – by Kathy Lewinski

Clue 1

Size: Large – 8” wide by 8” (or 7.5”) long

Abbreviations:

k - knit

p – purl

m1 – make one, direction does not matter

Follow the written pattern for shaping and the chart for the color pattern.

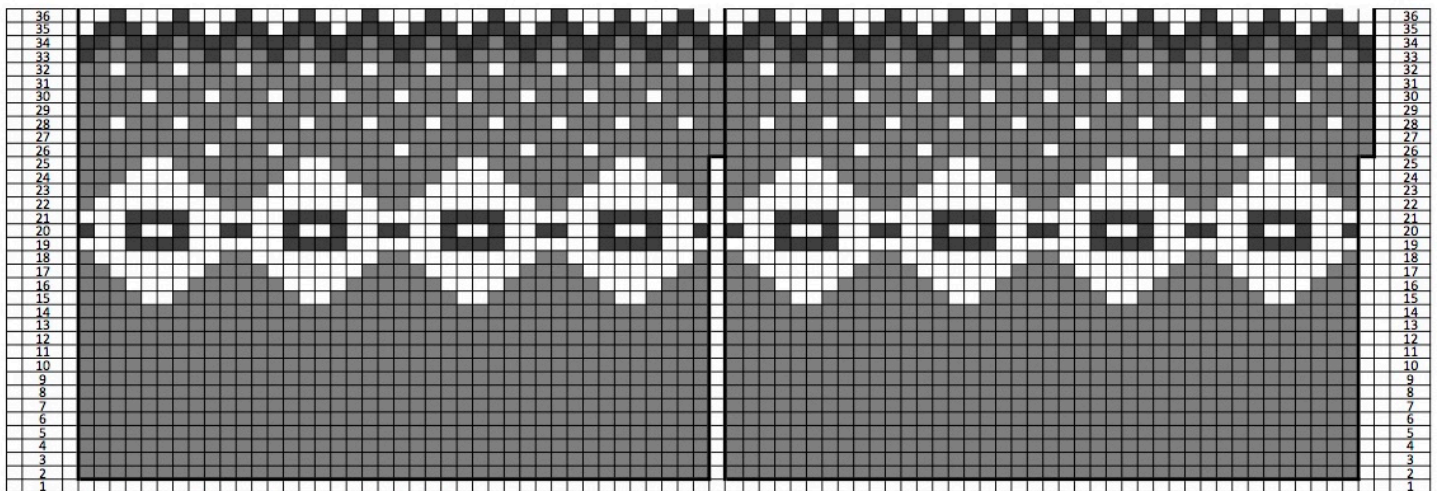
With main color, cast on 80 stitches. Divide between three needles. Join together to knit in the round placing a stitch marker between the first and last stitch to mark rows.

Row 1 - 13: *k1, p1, repeat from * until end of row (If you would like a cuff that is longer than 2”, work more rows of ribbing before starting row 14.)

Row 14 - 25: k

Row 26: m1, k40, m1, k40 (82 stitches)

Row 27 – 36: k



Copyright 2016 Kathy Lewinski JustCraftyEnough.com

Do not duplicate for distribution, repost, sell or teach this pattern or chart without permission