

Bloomin' Happy Mittens

Clue 3 - 7.5" Wide Version by Kathy Lewinski

Notes This section is worked the same for either thumb, but there are options for two different lengths. Work the 7.5" (19.05cm) chart until rnd. 99 for both lengths. For the 7" (17.78cm) length there is a separate chart for the top of the mitten.

Follow the chart for color changes and the written directions for shaping.

Color Notes:

Continue the color as you did in clue 2. On the palm of the mitten there are flowers at the very top. If you want to tie those into the color on the cuff work them with your CC2.

Abbreviations:

K – knit

K2tog – knit two together

Kfb – knit front and back

M1l – make one left

M1r – mark one right

P – purl

Rnd(s) – Round(s)

Ssk – slip, slip, knit

Both Thumb Versions:

Rnds 64 – 99: k

7" (17.78cm) Long Version:

Rnd 100: ssk, k33, k2tog, ssk, k33, k2tog (70 stitches)

Rnd 101: k

Rnd 102: ssk, k31, k2tog, ssk, k31, k2tog (66 stitches)

Rnd 103: k

Rnd 104: ssk, k29, k2tog, ssk, k29, k2tog (62 stitches)

Rnd 105: k

Rnd 106: ssk, k27, k2tog, ssk, k27, k2tog (58 stitches)

Rnd 107: k

Rnd 108: ssk, k25, k2tog, ssk, k25, k2tog (54 stitches)

Rnd 109: ssk, k23, k2tog, ssk, k23, k2tog (50 stitches)

Rnd 110: ssk, k21, k2tog, ssk, k21, k2tog (46 stitches)

Rnd 111: ssk, k19, k2tog, ssk, k19, k2tog (42 stitches)

Rnd 112: ssk, k17, k2tog, ssk, k17, k2tog (38 stitches)

Rnd 113: ssk, k15, k2tog, ssk, k15, k2tog (34 stitches)

Rnd 114: ssk, k13, k2tog, ssk, k13, k2tog (30 stitches)

Put the first 15 stitches on one needle and the second 15 on another. Seam with Kitchener stitch.

7.5”(19.05cm) Long Version:

Rnds: 100 – 104: k

Rnd 105: ssk, k33, k2tog, ssk, k33, k2tog (70 stitches)

Rnd 106: k

Rnd 107: ssk, k31, k2tog, ssk, k31, k2tog (66 stitches)

Rnd 108: k

Rnd 109: ssk, k29, k2tog, ssk, k29, k2tog (62 stitches)

Rnd 110: k

Rnd 111: ssk, k27, k2tog, ssk, k27, k2tog (58 stitches)

Rnd 112: k

Rnd 113: ssk, k25, k2tog, ssk, k25, k2tog (54 stitches)

Rnd 114: ssk, k23, k2tog, ssk, k23, k2tog (50 stitches)

Rnd 115: ssk, k21, k2tog, ssk, k21, k2tog (46 stitches)

Rnd 116: ssk, k19, k2tog, ssk, k19, k2tog (42 stitches)

Rnd 117: ssk, k17, k2tog, ssk, k17, k2tog (38 stitches)

Rnd 118: ssk, k15, k2tog, ssk, k15, k2tog (34 stitches)

Rnd 119: ssk, k13, k2tog, ssk, k13, k2tog (30 stitches)

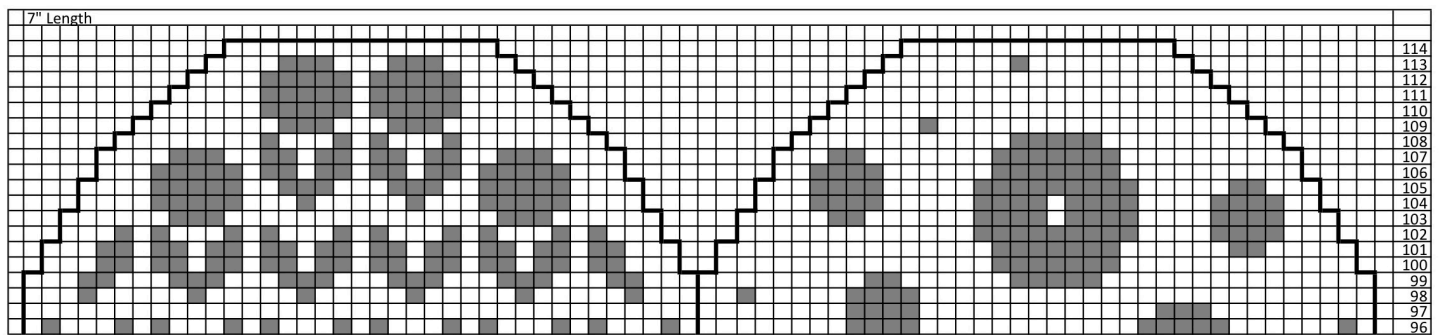
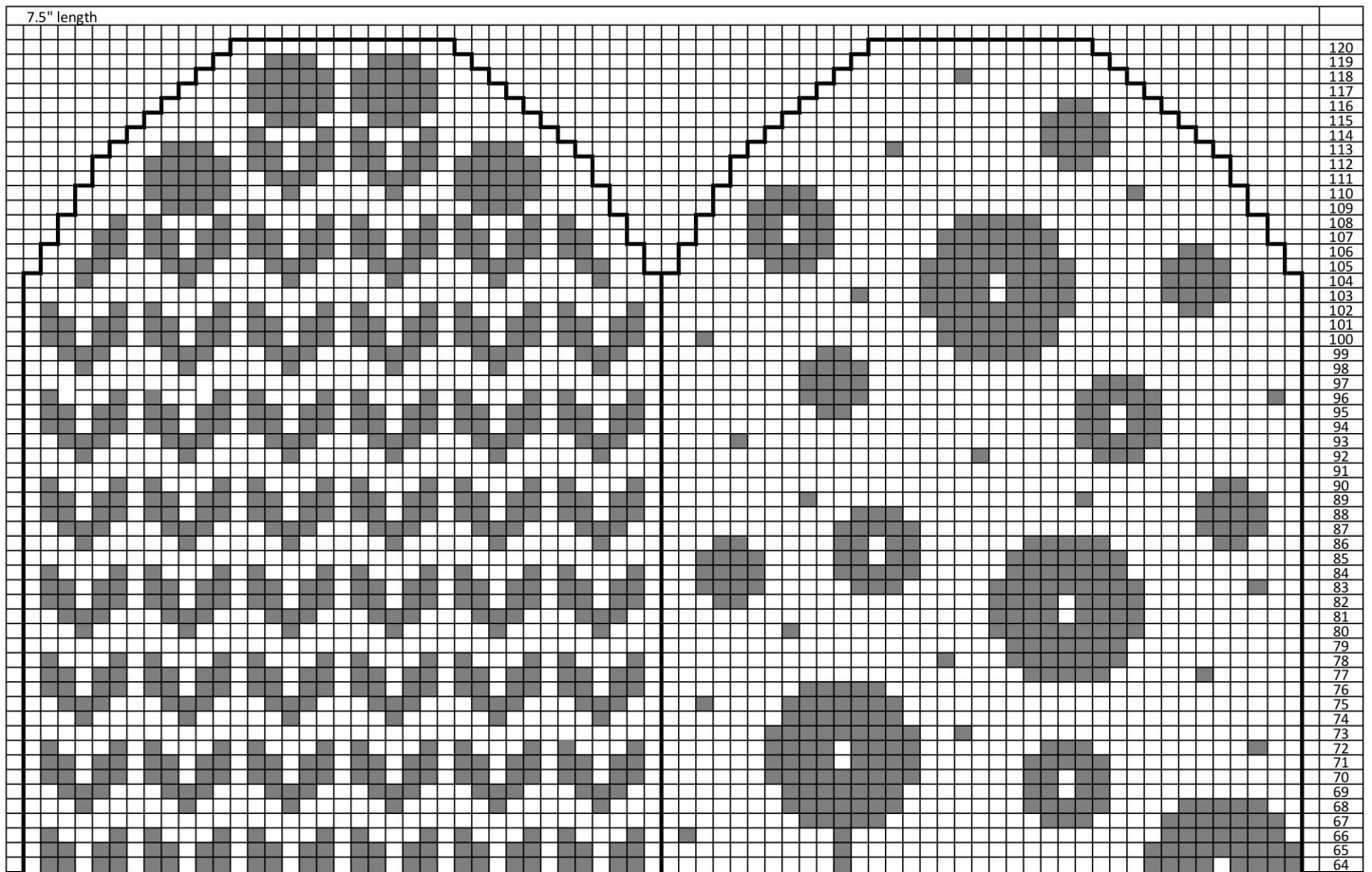
Rnd 120: ssk, k11, k2tog, ssk, k11, k2tog (26 stitches)

Put the first 13 stitches on one needle and the second 13 on another. Seam with Kitchener stitch.

Copyright 2018 Kathy Lewinski JustCraftyEnough.com

Do not duplicate for distribution, repost PDF for download, repost, sell or teach without permission.

Make sure to switch which side of the chart you work first if you are knitting the side-gore version.



Copyright 2018 Kathy Lewinski JustCraftyEnough.com
Do not duplicate for distribution, repost PDF for download, repost, sell or teach without permission.