

Bloomin' Happy Mittens

Clue 2 - 7" Wide Version by Kathy Lewinski

Notes: You can choose an after-thought or side gore thumb. Make sure you are following the correct chart and written directions for the version you are making.

Follow the chart for color changes and the written directions for shaping.

Abbreviations:

K – knit

K2tog – knit two together

Kfb – knit front and back

M1l – make one left

M1r – mark one right

P – purl

Rnd(s) – Round(s)

Ssk – slip, slip, knit

Color Notes:

If you are using two colors just continue as you started. If you are using three colors, switch to CC1 for the colorwork on the hand. It looks really cute to use CC2 as the center of the flowers. You can knit it in as you go, a bit trickier I admit, or duplicate stitch it in afterwards. You can do the duplicate stitching at the end of each section or when you finish the mittens. I did it to the finished blocked mittens.

Peasant (After-thought) Thumb Version:

(Note: The thumb can be placed any distance from the side of the mitten you prefer. Some people like it right at the edge, some people like it ½" in (which is 5 stitches in our pattern). You can change that to more or less stitches from the edge if you wish, but this will mean the colorwork design won't match up as written.)

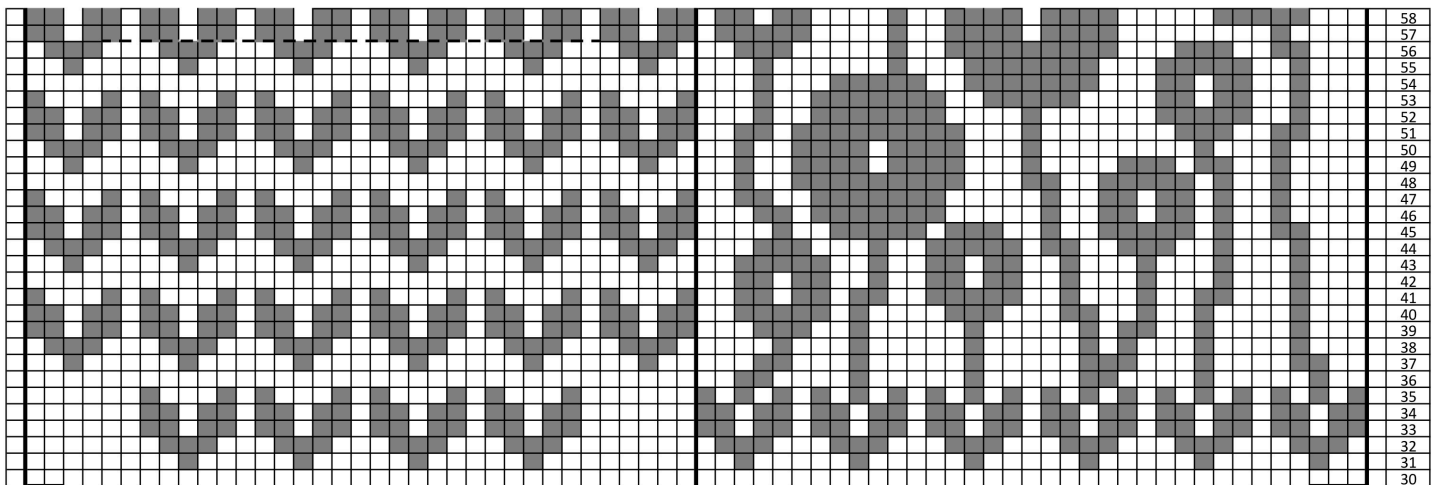
Rnd 30: k12, kfb, k12, kfb, k12, kfb, k12, kfb, k12, kfb (70 stitches)

Rnds 31– 56: k

Rnd 57 (right hand): k39, knit the next 15 stitches with a piece of scrap yarn, more them back to the left needle and reknit them with the working yarn, k16

Rnd 57 (left hand): k51, knit the next 15 stitches with a piece of scrap yarn, more them back to the left needle and reknit them with the working yarn, k4

Rnd 58: k



Copyright 2018 Kathy Lewinski JustCraftyEnough.com

Do not duplicate for distribution, repost PDF for download, repost, sell or teach without permission.

Side-Gore Thumb Version:

You'll want to make sure to switch the order you did the colorwork on the hand for the left mitten, knit the palm first and the back second with the thumb in between.

You will be adding a thumb gusset between the back and palm of the mitten. Placing stitch markers before the m1l and after the m1r can help you keep track of where the thumb is. Make sure to follow the color chart for the thumb in that section.

Rnd 30: k10, kfb, k10, kfb, k9, kfb, k10, kfb, k10, kfb, k10, kfb (71 stitches)

Rnd 31: k

Rnd 32: k35, m1l, k1, m1r, k35 (73 stitches)

Rnd 33: k35, m1l, k3, m1r, k35 (75 stitches)

Rnd 34: k35, m1l, k5, m1r, k35 (77 stitches)

Rnd 35: k35, m1l, k7, m1r, k35 (79 stitches)

Rnd 36: k35, m1l, k9, m1r, k35 (81 stitches)

Rnd 37: k

Rnd 38: k35, m1l, k11, m1r, k35 (83 stitches)

Rnd 39: k

Rnd 40: k35, m1l, k13, m1r, k35 (89 stitches)

Rnd 41: k

Rnd 42: k35, m1l, k15, m1r, k35 (91 stitches)

Rnd 43: k

Rnd 44: k35, m1l, k17, m1r, k35 (93 stitches)

Rnd 45: k

Rnd 46: k35, m1l, k19, m1r, k35 (95 stitches)

Rnd 47: k

Rnd 48: k35, m1l, k21, m1r, k35 (97 stitches)

Rnd 49: k

Rnd 50: k35, m1l, k23, m1r, k35 (99 stitches)

Rnd 51: k

Rnd 52: k35, m1l, k25, m1r, k35 (101 stitches)

Rnd 53: k

Rnd 54: k35, m1l, k27, m1r, k35 (103 stitches)

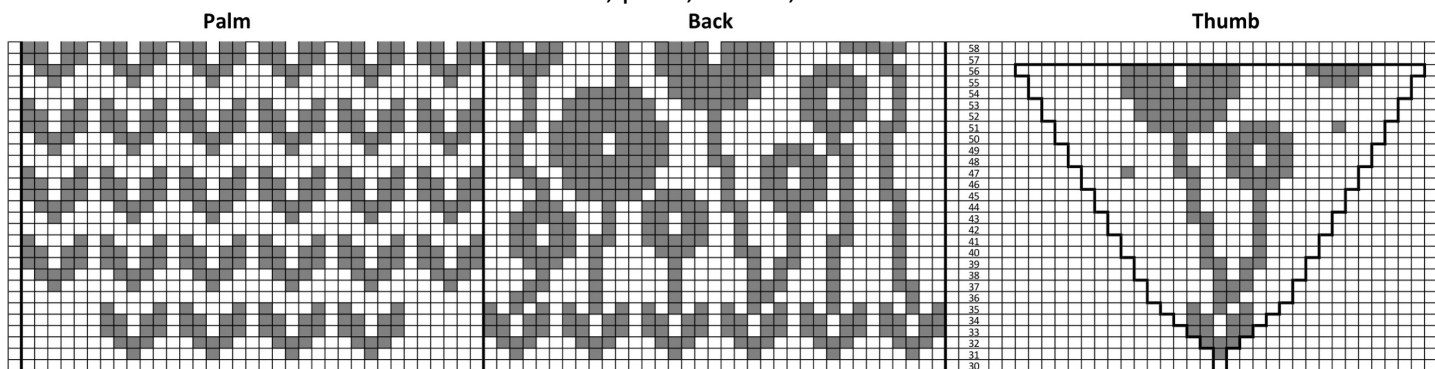
Rnd 55: k

Rnd 56: k35, m1l, k29, m1r, k35 (105 stitches)

Rnd 57: k35, put the 31 thumb stitches on a piece of scrap yarn, cast one 1, k35 (71 stitch on the needles)

Rnd 58: k34, k2tog, k35 (70 stitches)

For the right mitten work the chart in this order, back, thumb, palm.
 For the left mitten work the chart in this order, palm, thumb, back.



Copyright 2018 Kathy Lewinski JustCraftyEnough.com
 Do not duplicate for distribution, repost PDF for download, repost, sell or teach without permission.