

Bloomin' Happy Mittens

7.5" Wide Version by Kathy Lewinski

Notes: You can choose an after-thought or side gore thumb and the length can be either 7" or 7.5" (17.78 or 19.05cm). Make sure you are following the correct chart and written directions for the version you are making.

Follow the chart for color changes and the written directions for shaping. On the side-gore thumb version you'll want to make sure to switch the order you did the colorwork on the hand for the left mitten, knit the palm first and the back second with the thumb in between.

Supplies:

- Approx. 270 yards of fingering weight yarn in at least two colors. (I used three colors of Knit Picks Palette: Ciel 38g/177yds, White 17g/79yds, Raspberry Heather 3g/14yds for the 7.5" size)
- Size 1US/2.25mm needles (or size needed to get gauge) You can use 4 double points, two circulars or magic loop, whichever is your choice for knitting in the round.
- 1 stitch marker (On the side gore version you may opt to use two more stitch markers to mark the thumb gusset.)
- Scrap fingering yarn
- Tapestry needle

Gauge: 10 stitches and 12 rows per inch. It is important to get gauge to get the stated sizes. Do a swatch in stranded color work.

Abbreviations:

K – knit
K2tog – knit two together
Kfb – knit front and back
M1l – make one left
M1r – mark one right
P – purl
Rnd(s) – Round(s)
Ssk – slip, slip, knit

Both Thumb Versions:

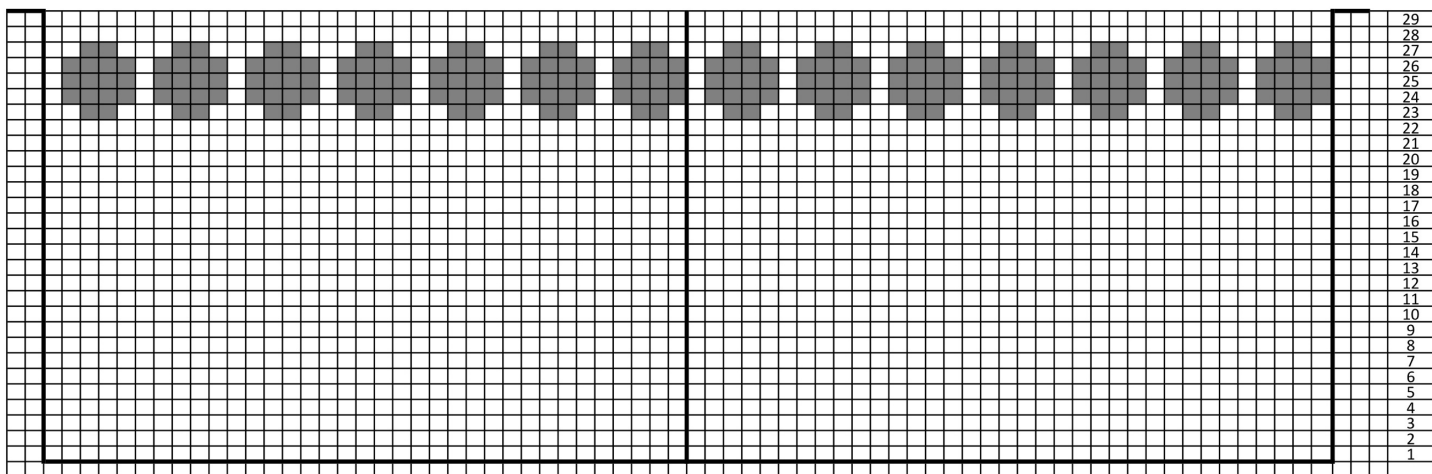
Cast on 70 stitches. Divide between three needles. Join together to knit in the round placing a stitch marker between the last and first stitch to mark rows.

Rnds 1 – 29: (K4, p1)14x start colorwork on row 23

Copyright 2018 Kathy Lewinski JustCraftyEnough.com

Do not duplicate for distribution, repost PDF for download, repost, sell or teach without permission.

The pattern is the area inside the bold lines. Work the chart the same for the left right and left hands.



Copyright 2018 Kathy Lewinski JustCraftyEnough.com

Do not duplicate for distribution, repost PDF for download, repost, sell or teach without permission.