

Under the Sea Mittens – by Kathy Lewinski

Clue 3

Size: Large – 8” wide by 7.5” or 8” long

Gauge: 10 stitches and 12 rows per inch

Abbreviations:

k - knit

p – purl

yo – yarn over

k2tog – knit two together

kfb – knit front and back

m1r – make one right

m1l – make one left

ssk – slip, slip, knit

Follow the written pattern for shaping and the chart for the color pattern.

This clue will finish off your hand. If you want it slightly longer, just continue to decrease as in the pattern. Keep in mind this will give you a pointier top.

Make sure to follow the chart and pattern for the length mitten you want. This is the length of your hand not including the cuff.

7.5” Length:

Row 80 – 106: k

Row 107: ssk, k36, k2tog, ssk, k36, k2tog (76 stitches)

Row 108: k

Row 109: ssk, k34, k2tog, ssk, k34, k2tog (72 stitches)

Row 110: k

Row 111: ssk, k32, k2tog, ssk, k32, k2tog (68 stitches)

Row 112: k

Row 113: ssk, k30, k2tog, ssk, k30, k2tog (64 stitches)

Row 114: k

Row 115: ssk, k28, k2tog, ssk, k28, k2tog (60 stitches)

Row 116: k

Row 117: ssk, k26, k2tog, ssk, k26, k2tog (56 stitches)

Row 118: ssk, k24, k2tog, ssk, k24, k2tog (52 stitches)

Row 119: ssk, k22, k2tog, ssk, k22, k2tog (48 stitches)

Row 120: ssk, k20, k2tog, ssk, k20, k2tog (44 stitches)

Row 121: ssk, k18, k2tog, ssk, k18, k2tog (40 stitches)

Row 122: ssk, k16, k2tog, ssk, k16, k2tog (36 stitches)

Row 123: ssk, k14, k2tog, ssk, k14, k2tog (32 stitches)

Row 124: ssk, k12, k2tog, ssk, k12, k2tog (28 stitches)

Place the first 14 stitches on one needle and the second 14 on another. Seam using Kitchener stitch.

8" Length:

Row 82 – 108: k

Row 109: ssk, k36, k2tog, ssk, k36, k2tog (76 stitches)

Row 110 – 111: k

Row 112: ssk, k34, k2tog, ssk, k34, k2tog (72 stitches)

Row 113 – 114: k

Row 115: ssk, k32, k2tog, ssk, k32, k2tog (68 stitches)

Row 116: k

Row 117: ssk, k30, k2tog, ssk, k30, k2tog (64 stitches)

Row 118: k

Row 119: ssk, k28, k2tog, ssk, k28, k2tog (60 stitches)

Row 120: k

Row 121: ssk, k26, k2tog, ssk, k26, k2tog (56 stitches)

Row 122: ssk, k24, k2tog, ssk, k24, k2tog (52 stitches)

Row 123: ssk, k22, k2tog, ssk, k22, k2tog (48 stitches)

Row 124: ssk, k20, k2tog, ssk, k20, k2tog (44 stitches)

Row 125: ssk, k18, k2tog, ssk, k18, k2tog (40 stitches)

Row 126: ssk, k16, k2tog, ssk, k16, k2tog (36 stitches)

Row 127: ssk, k14, k2tog, ssk, k14, k2tog (32 stitches)

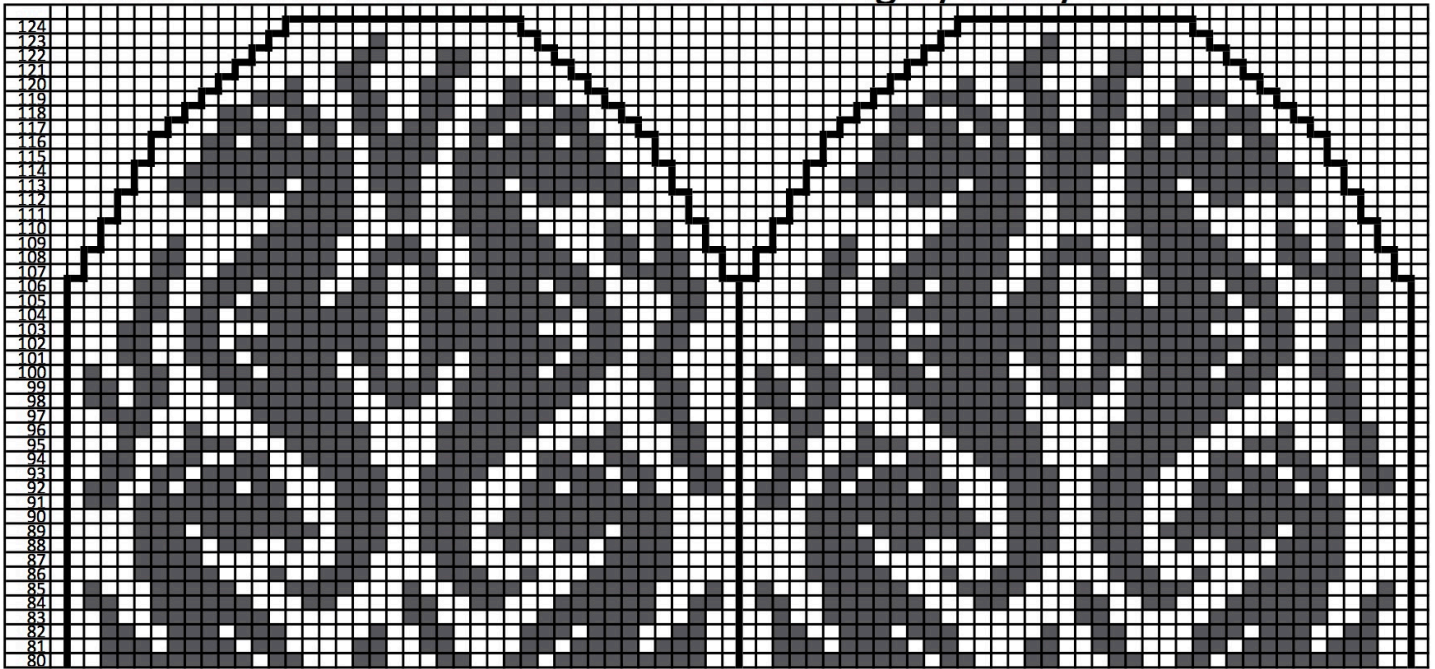
Row 128: ssk, k12, k2tog, ssk, k12, k2tog (28 stitches)

Place the first 14 stitches on one needle and the second 14 on another. Seam using Kitchener stitch.

Copyright 2017 Kathy Lewinski JustCraftyEnough.com

Do not duplicate for distribution, repost, sell or teach this pattern or chart without permission.

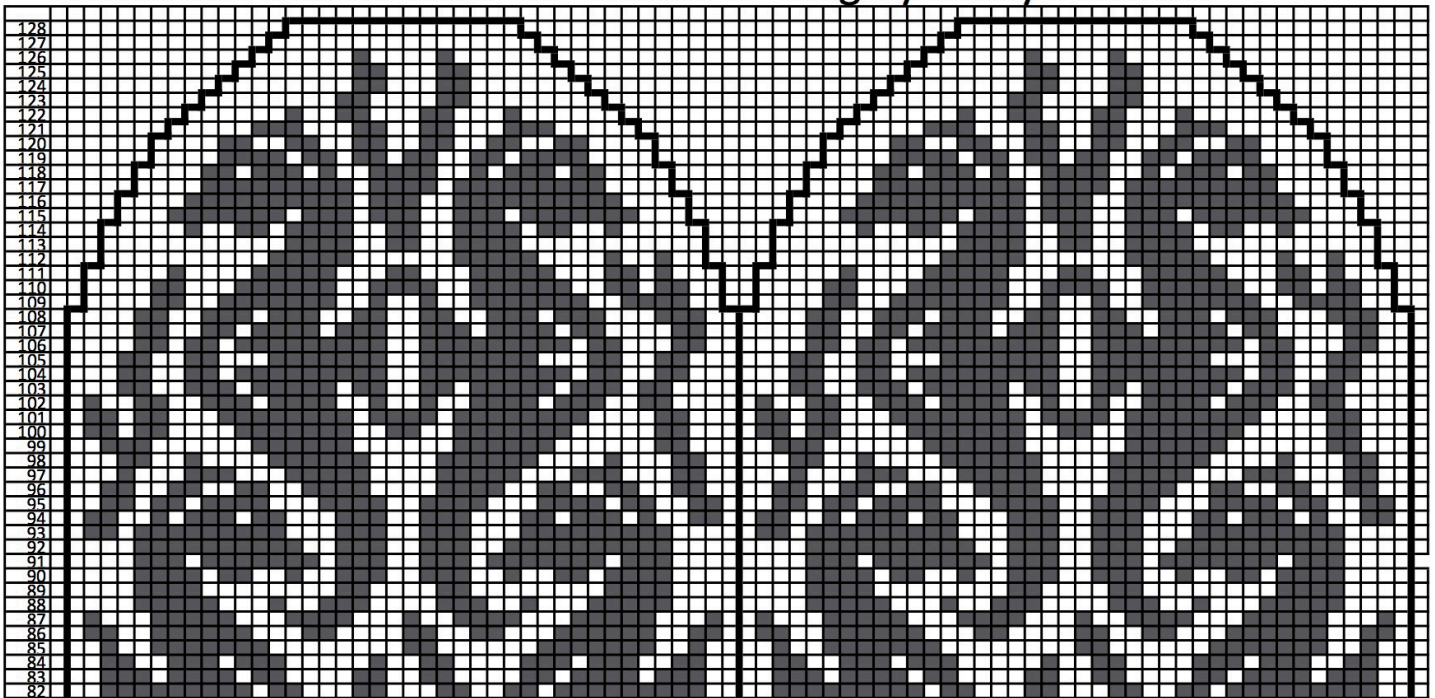
Under the Sea Mittens - 8" wide x 7.5" long by Kathy Lewinski



Copyright 2017 Kathy Lewinski JustCraftyEnough.com

Do not duplicate for distribution, repost, sell or teach this pattern or chart without permission

Under the Sea Mittens - 8" wide x 8" long by Kathy Lewinski



Copyright 2017 Kathy Lewinski JustCraftyEnough.com

Do not duplicate for distribution, repost, sell or teach this pattern or chart without permission