

Under the Sea Mittens – by Kathy Lewinski

Clue 2

Size: Large – 8” wide by 7.5” or 8” long

Gauge: 10 stitches and 12 rows per inch

Abbreviations:

k - knit

p – purl

yo – yarn over

k2tog – knit two together

kfb – knit front and back

m1r – make one right

m1l – make one left

Follow the written pattern for shaping and the chart for the color pattern.

On this section, and for the rest of the hand, I used my contrast color 1, light green.

You will be knitting the thumb gusset in this section. It is the section in the written pattern between and including the make ones that you knit between the two sides of the mitten. You may find it helpful to mark off this section by putting a stitch marker before the m1l and after the m1r. It has its own colorwork chart, which is the triangle off to the right side of the main chart. Make sure not to forget to start the colorwork on the thumb on row 40.

Make sure to follow the chart and pattern for the length mitten you want. This is the length of your hand not including the cuff.

Both lengths:

Row 35: k14, kfb, k14, kfb, k15, kfb, k14, kfb, k14, kfb (81 stitches)

Row 36: k

Row 37: k40, m1l, k1, m1r, k40 (83 stitches)

Row 38: k

Row 39: k40, m1l, k3, m1r k40 (85 stitches)

Row 40 (start colorwork on thumb): k

Row 41: k40, m1l, k5, m1r, k40 (87 stitches)

Row 42: k

Row 43: k40, m1l, k7, m1r, k40 (89 stitches)

Row 44: k

Row 45: k40, m1l, k9, m1r, k40 (91 stitches)

Row 46: k

Row 47: k40, m1l, k11, m1r, k40 (93 stitches)

Row 48: k

Row 49: k40, m1l, k13, m1r, k40 (95 stitches)

Row 50: k

Row 51: k40, m1l, k15, m1r, k40 (97 stitches)

Row 52: k
Row 53: k40, m1l, k17, m1r, k40 (99 stitches)
Row 54: k
Row 55: k40, m1l, k19, m1r, k40 (101 stitches)
Row 56 - 57: k
Row 58: k40, m1l, k21, m1r, k40 (103 stitches)
Row 59 - 60: k
Row 61: k40, m1l, k23, m1r, k40 (105 stitches)
Row 62 - 63: k
Row 64: k40, m1l, k25, m1r, k40 (107 stitches)
Row 65 - 66: k
Row 67: k40, m1l, k27, m1r, k40 (109 stitches)
Row 68 - 70: k
Row 71: k40, place the next 29 stitches on a piece of scrap yarn, cast on one stitch, k40 (81 stitches)
Row 72: k39, k2tog, k40 (80 stitches)

7.5" Length:

Row 73 - 79: k

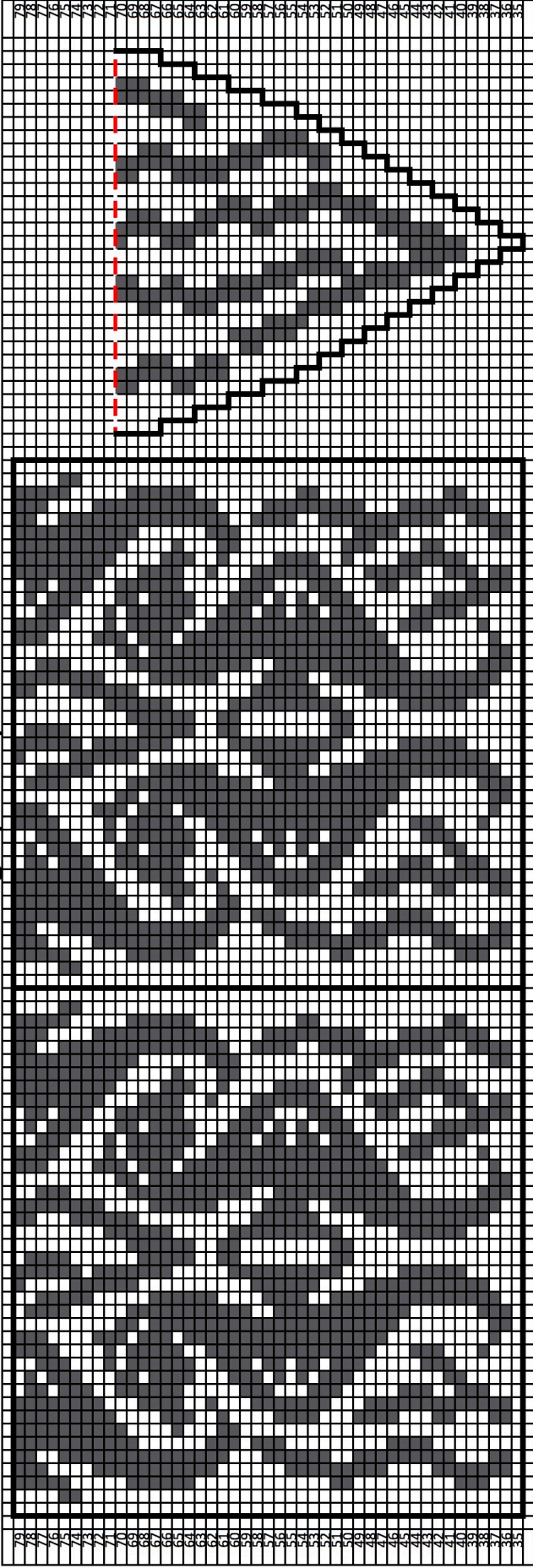
8" Length:

Row 73 - 81 k

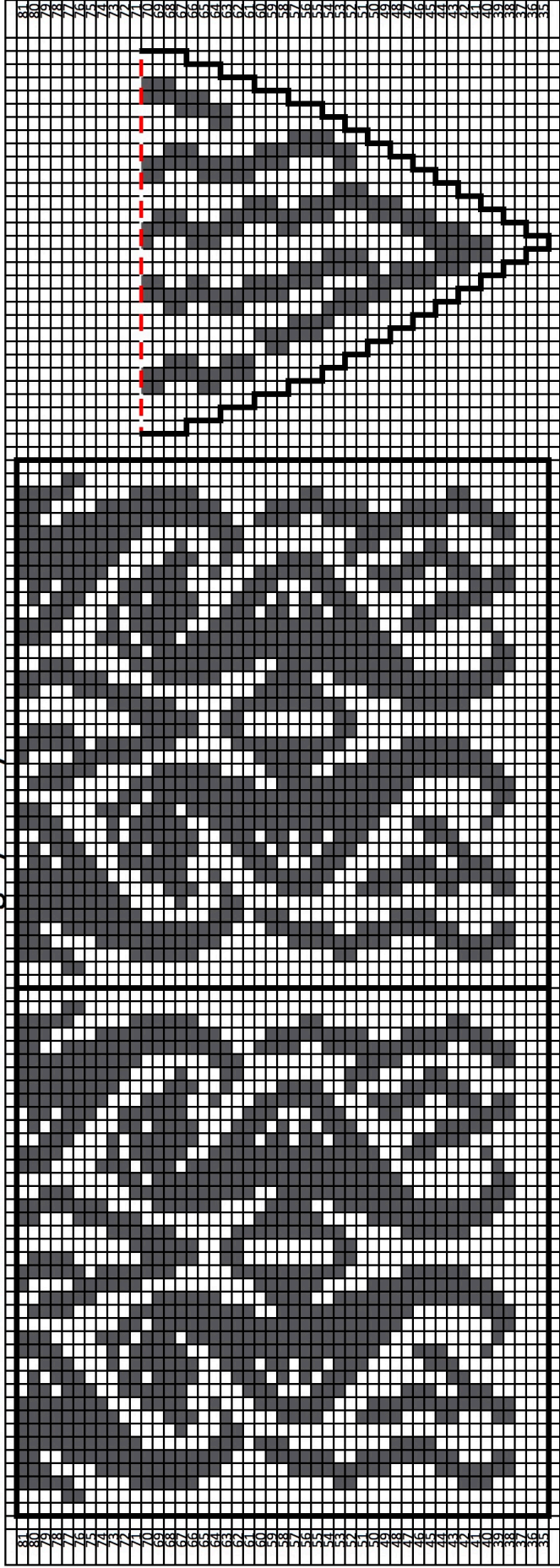
Copyright 2017 Kathy Lewinski JustCraftyEnough.com

Do not duplicate for distribution, repost, sell or teach this pattern or chart without permission.

Under the Sea Mittens - 8" wide x 7.5" long by Kathy Lewinski



Under the Sea Mittens - 8" wide x 8" long by Kathy Lewinski



Copyright 2017 Kathy Lewinski JustCraftyEnough.com

Do not duplicate for distribution, repost, sell or teach this pattern or chart without permission