

Winter Snows Mittens – by Kathy Lewinski

Clue 3

Size: Small – 7” wide by 7” (or 6 1/2”) long

Abbreviations:

k - knit

p – purl

m1 – make one, direction does not matter

ssk – slip, slip, knit

k2tog – knit two together

Follow the written pattern for shaping and the chart for the color pattern.

7” length :

Row 67 – 95: k

Row 96: ssk, k31, k2tog, ssk, k31, k2tog (66 stitches)

Row 97: k

Row 98: ssk, k29, k2tog, ssk, k29, k2tog (62 stitches)

Row 99: k

Row 100: ssk, k27, k2tog, ssk, k27, k2tog (58 stitches)

Row 101: k

Row 102: ssk, k25, k2tog, ssk, k25, k2tog (54 stitches)

Row 103: ssk, k23, k2tog, ssk, k23, k2tog (50 stitches)

Row 104: ssk, k21, k2tog, ssk, k21, k2tog (46 stitches)

Row 105: ssk, k19, k2tog, ssk, k19, k2tog (42 stitches)

Row 106: ssk, k17, k2tog, ssk, k17, k2tog (38 stitches)

Row 107: ssk, k15, k2tog, ssk, k15, k2tog (34 stitches)

Row 108: ssk, k13, k2tog, ssk, k13, k2tog (30 stitches)

6.5” length :

Row 67 – 91: k

Row 92: ssk, k31, k2tog, ssk, k31, k2tog (66 stitches)

Row 93: k

Row 94: ssk, k29, k2tog, ssk, k29, k2tog (62 stitches)

Row 95: k

Row 96: ssk, k27, k2tog, ssk, k27, k2tog (58 stitches)

Row 97: ssk, k25, k2tog, ssk, k25, k2tog (54 stitches)

Row 98: ssk, k23, k2tog, ssk, k23, k2tog (50 stitches)

Row 99: ssk, k21, k2tog, ssk, k21, k2tog (46 stitches)

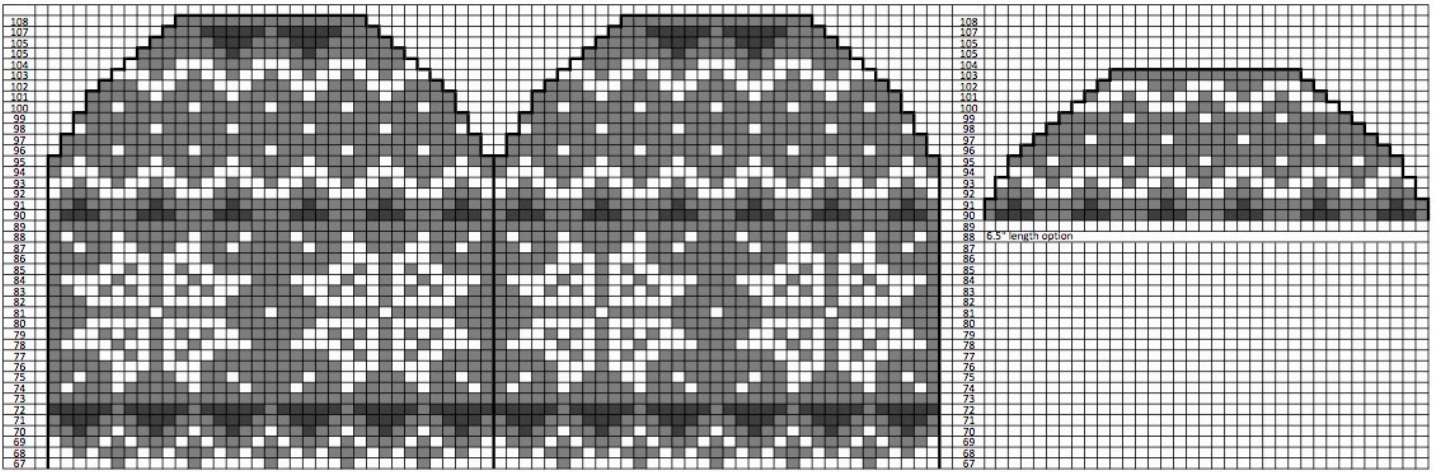
Row 100: ssk, k19, k2tog, ssk, k19, k2tog (42 stitches)

Row 101: ssk, k17, k2tog, ssk, k17, k2tog (38 stitches)

Row 102: ssk, k15, k2tog, ssk, k15, k2tog (34 stitches)

Row 103: ssk, k13, k2tog, ssk, k13, k2tog (30 stitches)

Both sizes: Put the front stitches on one needle and the back on another. Seam top using Kitchener stitch.



Copyright 2016 Kathy Lewinski JustCraftyEnough.com

Do not duplicate for distribution, repost, make available for download, sell or teach this pattern or chart without permission.