

Winter Snows Mittens – by Kathy Lewinski

Clue 3

Size: Medium – 7.5" wide by 7.5" (or 7") long

Abbreviations:

k - knit

p - purl

m1 - make one, direction does not matter

ssk - slip, slip, knit

k2tog - knit two together

Follow the written pattern for shaping and the chart for the color pattern.

7.5" length:

Row 70 – 99: k

Row 100: ssk, k33, k2tog, ssk, k33, k2tog (70 stitches)

Row 101: k

Row 102: ssk, k31, k2tog, ssk, k31, k2tog (66 stitches)

Row 103: k

Row 104: ssk, k29, k2tog, ssk, k29, k2tog (62 stitches)

Row 105: k

Row 106: ssk, k27, k2tog, ssk, k27, k2tog (58 stitches)

Row 107: k

Row 108: ssk, k25, k2tog, ssk, k25, k2tog (54 stitches)

Row 109: ssk, k23, k2tog, ssk, k23, k2tog (50 stitches)

Row 110: ssk, k21, k2tog, ssk, k21, k2tog (46 stitches)

Row 111: ssk, k19, k2tog, ssk, k19, k2tog (42 stitches)

Row 112: ssk, k17, k2tog, ssk, k17, k2tog (38 stitches)

Row 113: ssk, k15, k2tog, ssk, k15, k2tog (34 stitches)

Row 114: ssk, k13, k2tog, ssk, k13, k2tog (30 stitches)

7" length:

Row 70 – 95: k

Row 96: ssk, k33, k2tog, ssk, k33, k2tog (70 stitches)

Row 97: k

Row 98: ssk, k31, k2tog, ssk, k31, k2tog (66 stitches)

Row 99: k

Row 100: ssk, k29, k2tog, ssk, k29, k2tog (62 stitches)

Row 101: k

Row 102: ssk, k27, k2tog, ssk, k27, k2tog (58 stitches)

Row 103: ssk, k25, k2tog, ssk, k25, k2tog (54 stitches)

Row 104: ssk, k23, k2tog, ssk, k23, k2tog (50 stitches)

Row 105: ssk, k21, k2tog, ssk, k21, k2tog (46 stitches)

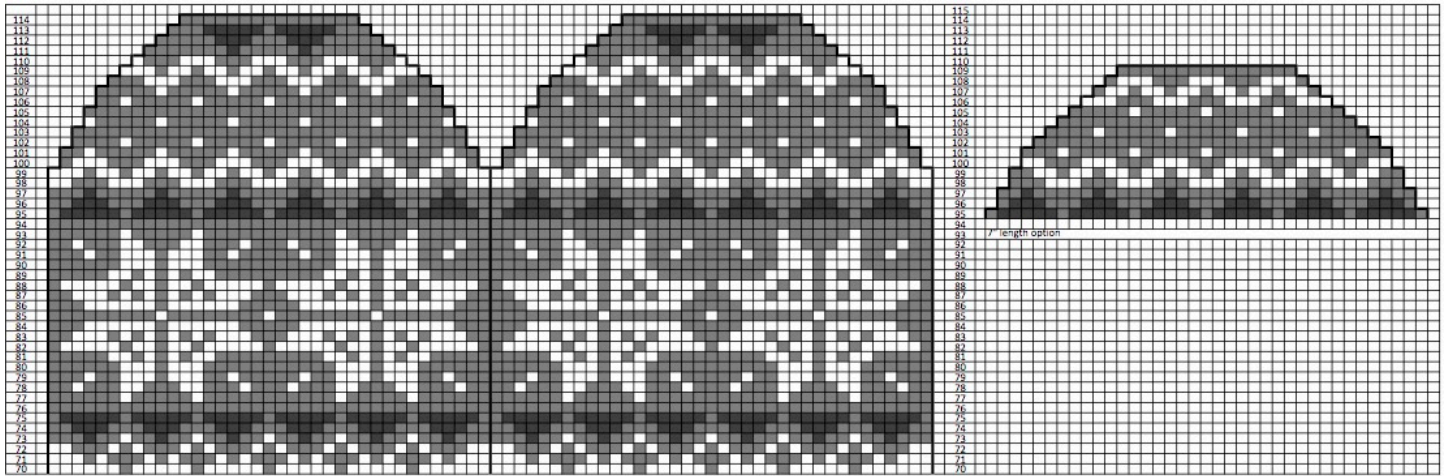
Row 106: ssk, k19, k2tog, ssk, k19, k2tog (42 stitches)

Row 107: ssk, k17, k2tog, ssk, k17, k2tog (38 stitches)

Row 108: ssk, k15, k2tog, ssk, k15, k2tog (34 stitches)

Row 109: ssk, k13, k2tog, ssk, k13, k2tog (30 stitches)

Both sizes: Put the stitches from the front on one needle and the stitches from the back on another. Seam together using kitchener stitch.



Copyright 2016 Kathy Lewinski JustCraftyEnough.com

Do not duplicate for distribution, repost, make available for download, sell or teach this pattern or chart without permission.