

Winter Snows Mittens – by Kathy Lewinski

Clue 2

Size: Large – 8” wide by 8” (or 7.5”) long

Abbreviations:

k - knit

p – purl

m1 – make one, direction does not matter

Follow the written pattern for shaping and the chart for the color pattern.

Row 37 – 60: k

Row 61: (Right mitten) k46, k16 onto scrap yarn, move those 16 stitches back to the left needle, k36 with working yarn

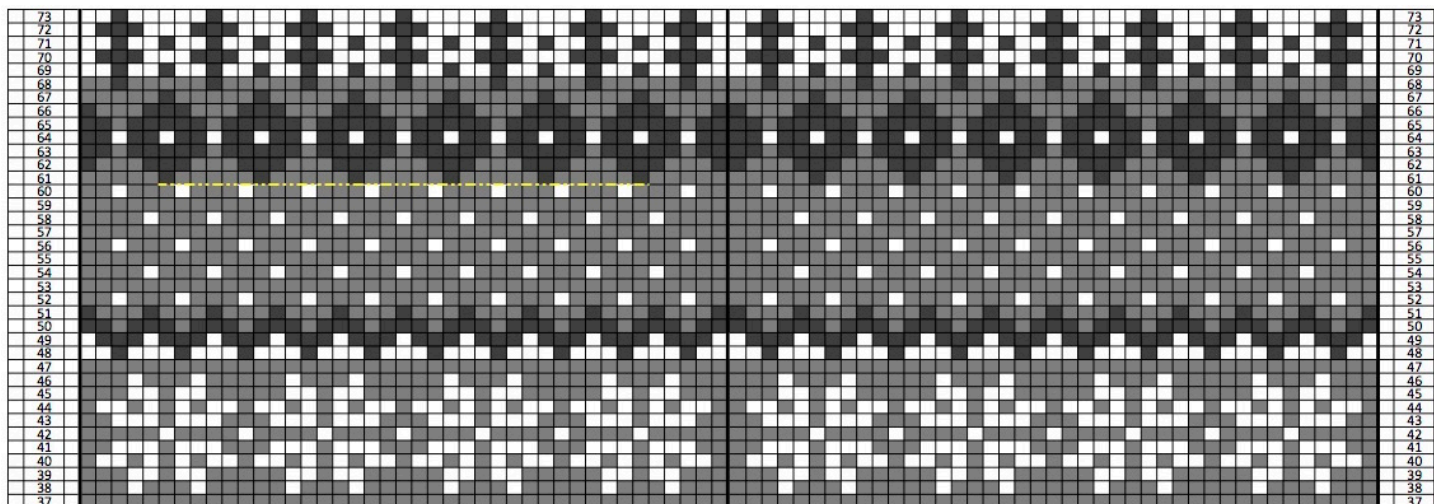
Row 61: (Left mitten) k61, k16 onto scrap yarn, move those 16 stitches back to the left needle, k21 with working yarn

Alternative thumb placement:

Row 61: (Right mitten) k42, k16 onto scrap yarn, move those 16 stitches back to the left needle, k40 with working yarn

Row 61: (Left mitten) k65, k16 onto scrap yarn, move those 16 stitches back to the left needle, k17 with working yarn

Row 62 – 73: k



Copyright 2016 Kathy Lewinski JustCraftyEnough.com

Do not duplicate for distribution, repost, make available for download, sell or teach this pattern or chart without permission.