



Hearts and Dalas Mittens

by Kathy Lewinski

Size: Approximately 10 inches long (2" of that is cuff) and 7.5 inches around, woman's medium. Normally, I would make the hand 7.5" long, on this mitten I made it 8" because of the pointed top.

Gauge: 15 stitches and 17 rows per inch (stranded color work in the round on larger needles) It is important to get gauge to get the stated size.

Supplies:

- Needles 0000 and 000 or size to get gauge
- Lace weight yarn approx. 46g/407yds total. I used Knit Picks Gloss Lace in Bare Natural 28g/247yds, Fiesta 18g/124yds and Marina 4g/36yds
- Stitch marker
- Scrap lace weight yarn
- Tapestry needle
- Scissors

Abbreviations:

- K – knit
- P – purl
- K2tog – knit two stitches together
- Yo – yarn over
- Ssk – slip two stitches and then knit them together
- M1 – make one stitch in either direction
- X – times, as in how many times to repeat the set of instructions in parenthesis

Hemmed Picot Edging:

Cast on 90 stitches on smaller needles. Join together to knit in the round being careful not to twist the stitches. Place a stitch marker between the first and last stitch to mark rows.

Row 1 – 5: k

Row 6: (k2tog, yo)45x

Row 7 – 11: k

Row 12: Fold the cuff inside at row 6. Pick up the edge of each cast on stitch and knit it with the corresponding stitch on the needle to make a hem.

Cuff:

Row 13: (k8, kfb)10x (100 stitches)

Row 14 – 41: change to larger needles, k

Hand:

Row 42: (k8, m1, m8, m1, k9, m1)4x (112 stitches)

Row 43 – 84: k

Row 85 Right Hand: k8, knit the next 21 stitches on to the piece of scrap yarn (you are not worrying about the color pattern while doing this), put those stitches back on the left needle, k104 following color pattern.

Row 85 Left Hand: k28, knit the next 21 stitches on to the piece of scrap yarn (you are not worrying about the color pattern while doing this), put those stitches back on the left needle, k84 following color pattern.

Row 86 – 152: k

Row 153: k, ssk, k51, k2tog, k, ssk, k51, k2tog (108 stitches)

Row 154: k, ssk, k49, k2tog, k, ssk, k49, k2tog (104 stitches)

Row 155: k, ssk, k47, k2tog, k, ssk, k47, k2tog (100 stitches)

Row 156: k, ssk, k45, k2tog, k, ssk, k45, k2tog (96 stitches)

Row 157: k, ssk, k43, k2tog, k, ssk, k43, k2tog (92 stitches)

Row 158: k, ssk, k41, k2tog, k, ssk, k41, k2tog (88 stitches)

Row 159: k, ssk, k39, k2tog, k, ssk, k39, k2tog (84 stitches)

Row 160: k, ssk, k37, k2tog, k, ssk, k37, k2tog (80 stitches)

Row 161: k, ssk, k35, k2tog, k, ssk, k35, k2tog (76 stitches)

Row 162: k, ssk, k33, k2tog, k, ssk, k33, k2tog (72 stitches)

Row 163: k, ssk, k31, k2tog, k, ssk, k31, k2tog (68 stitches)

Row 164: k, ssk, k29, k2tog, k, ssk, k29, k2tog (64 stitches)

Row 165: k, ssk, k27, k2tog, k, ssk, k27, k2tog (60 stitches)

Row 166: k, ssk, k25, k2tog, k, ssk, k25, k2tog (56 stitches)

Row 167: k, ssk, k23, k2tog, k, ssk, k23, k2tog (52 stitches)

Row 168: k, ssk, k21, k2tog, k, ssk, k21, k2tog (48 stitches)

Row 169: k, ssk, k19, k2tog, k, ssk, k19, k2tog (44 stitches)

Row: 170: k, ssk, k17, k2tog, k, ssk, k17, k2tog (40 stitches)

Row 171: k, ssk, k15, k2tog, k, ssk, k15, k2tog (36 stitches)

Row 172: k, ssk, k13, k2tog, k, ssk, k13, k2tog (32 stitches)

Row 173: k, ssk, k11, k2tog, k, ssk, k11, k2tog (28 stitches)

Row 174: k, ssk, k9, k2tog, k, ssk, k9, k2tog (24 stitches)

Row 175: k, ssk, k7, k2tog, k, ssk, k7, k2tog (20 stitches)

Row 176: k, ssk, k5, k2tog, k, ssk, k5, k2tog (16 stitches)

Row 177: k, ssk, k3, k2tog, k, ssk, k3, k2tog (12 stitches)

Row 178: k, ssk, k1, k2tog, k, ssk, k1, k2tog (8 stitches)

Put the first 4 stitches on one needle and the second 4 on another. Cut yarn leaving about a 12" tail of the cream. Seam together top of mitten with Kitchener stitch. (You could also just weave the tail through the stitches on the needles and pull tight.)

Thumb:

Carefully pick up the stitches above the below the scrap yarn you knit with on row 85 and remove the scrap yarn. You will have 42 stitches, 21 from below the yarn and 21 from above. Now divide between three needles, picking up two stitches on either side from the hand between the top and bottom stitches, giving you 46 stitches. Place a stitch marker before the picked up stitches on the right side to mark rows.

Row 85: k2tog, k21, k2tog, k21 (44 stitches)

Row 86 – 119: k

Row 120: ssk, k19, k2tog, k21 (42 stitches)
Row 121: ssk, k17, k2tog, ssk, k17, k2tog (38 stitches)
Row 122: ssk, k15, k2tog, ssk, k15, k2tog (34 stitches)
Row 123: ssk, k13, k2tog, ssk, k13, k2tog (30 stitches)
Row 124: ssk, k11, k2tog, ssk, k11, k2tog (26 stitches)
Row 125: ssk, k9, k2tog, ssk, k9, k2tog (22 stitches)
Row 126: ssk, k7, k2tog, ssk, k7, k2tog (18 stitches)
Row 127: ssk, k5, k2tog, ssk, k5, k2tog (14 stitches)
Row 128: ssk, k3, k2tog, ssk, k3, k2tog (10 stitches)
Row 129: ssk, k1, k2tog, ssk, k1, k2tog (6 stitches)

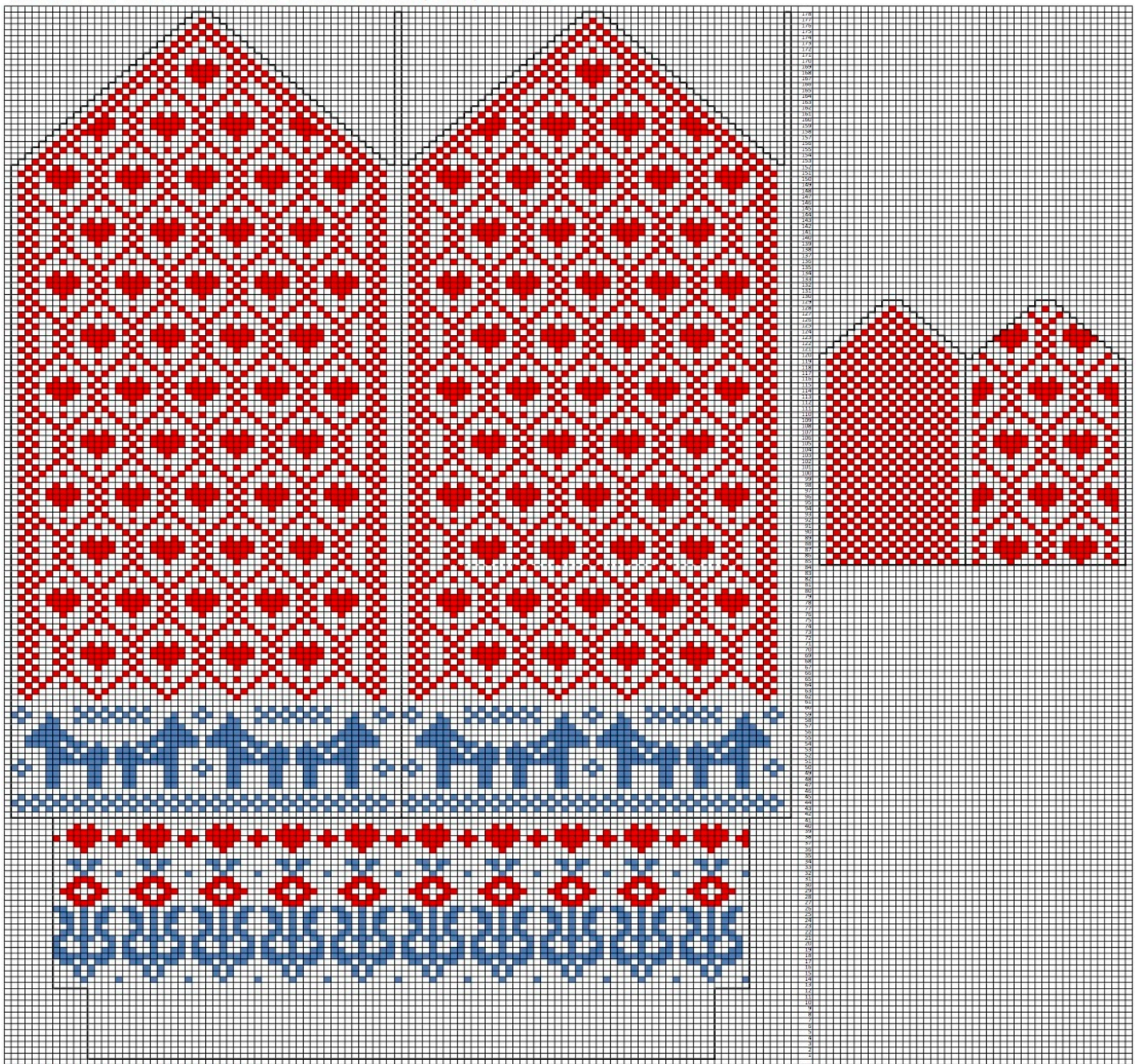
Put the first 3 stitches on one needle and the second 4 on another. Cut yarn leaving about a 10" tail of the cream. Seam together top of mitten with Kitchener stitch. (You could also just weave the tail through the stitches on the needles and pull tight.)

Weave in ends.

Copyright 2015 Kathy Lewinski JustCraftyEnough.com

Do not duplicate for distribution, repost, post pdf for download, teach or sell without permission.

Hearts and Dalas Mittens by Kathy Lewinski



Copyright 2015 Kathy Lewinski JustCraftyEnough.com
Do not duplicate for distribution, repost, post pdf for download, teach or sell without permission.