



Falling Leaves Mittens

Supplies:

- four size 2 double-pointed needles (or size needed to get gauge)
- sport weight yarn, about 125 – 150 yards each of two colors. (If you color match with self-striping yarn for the leaves, you may need a little more of that yarn.)
- stitch markers
- scrap yarn
- tapestry needle

Size: Woman's Medium (7.5 inches wide)

Gauge: 7 stitches and 9 rows per inch

Abbreviations:

- k – knit
- p – purl
- m1 – make one (directions doesn't matter)
- m1r – make one stitch right
- m1l – make one stitch left
- ssk – slip, slip, knit
- k2tog – knit two stitches together

Follow chart for color pattern. Both hands are knit identically.

Cuff:

Cast on 52 stitches. Divide between three needles. Join to knit in the round placing a stitch marker between the first and last stitch to mark rows.

Rows 1 – 5: k1, p1 until end of row

Rows 6 – 28: k

Hand and Thumb Gusset:

Row 29: k13, m1, k13, m1, k13, m1, k13, m1 (56 stitches)

Row 30: k

Row 31: k27, m1l, k2, m1r, k27 (58 stitches) Place stitch markers before the first m1 and after the second if you wish.

Row 32: k

Row 33: k27, m1l, k4, m1r, k27 (60 stitches)

Row 34: k

Row 35: k27, m1l, k6, m1r, k27 (62 stitches)

Row 36: k

Row 37: k27, m1l, k8, m1r, k27 (64 stitches)

Row 38: k
Row 39: k27, m1l, k10, m1r, k27 (66 stitches)
Row 40: k
Row 41: k27, m1l, k12, m1r, k27 (68 stitches)
Row 42: k
Row 43: k27, m1l, k14, m1r, k27 (70 stitches)
Row 44: k
Row 45: k27, m1l, k16, m1r, k27 (72 stitches)
Row 46: k
Row 47: k27, m1l, k18, m1r, k27 (74 stitches)
Row 48: k
Row 49: k27, m1l, k20, m1r, k27 (76 stitches)
Row 50: k
Row 51: k27, place the next 22 stitches on a piece of scrap yarn, cast on one stitch, k27 (55 stitches on the needles, 22 on scrap yarn)
Row 52: k27, k2tog, k26 (54 stitches)
Rows 53 – 85: k
Row 86: ssk, k23, k2tog, ssk, k23, k2tog (50 stitches)
Row 87: k
Row 88: ssk, k21, k2tog, ssk, k21, k2tog (46 stitches)
Row 89: k
Row 90: ssk, k19, k2tog, ssk, k19, k2tog (42 stitches)
Row 91: k
Row 92: ssk, k17, k2tog, ssk, k17, k2tog (38 stitches)
Row 93: k
Row 94: ssk, k15, k2tog, ssk, k15, k2tog (34 stitches)
Row 95: k
Row 96: ssk, k13, k2tog, ssk, k13, k2tog (30 stitches)
Row 97: ssk, k11, k2tog, ssk, k11, k2tog (26 stitches)
Row 98: ssk, k9, k2tog, ssk, k9, k2tog (22 stitches)
Row 99: ssk, k7, k2tog, ssk, k7, k2tog (18 stitches)

Cut yarn leaving about a 10 – 12” tail. Seam shut with Kitchener stitch. Weave in ends

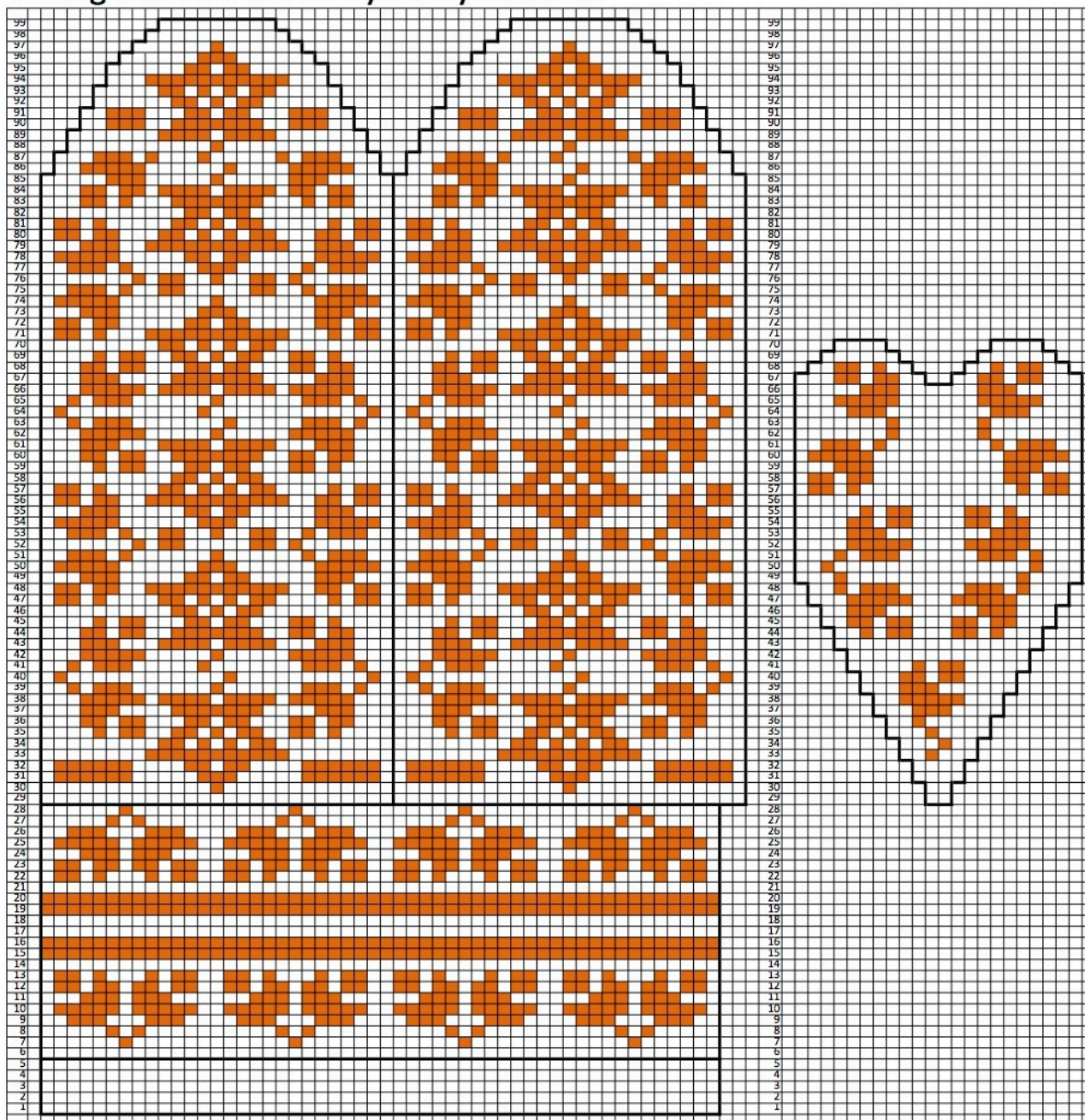
Thumb:

Put the 22 stitches on the scrap yarn on three needles. Pick up a stitch from the hand on the mitten. Place a stitch marker between the picked-up stitch and the next stitch to mark rows.

Row 51: k21, k2tog (22 stitches)
Rows 52 – 66: k
Row 67: k9, k2tog, ssk, k9 (20 stitches)
Row 68: ssk, k6, k2tog, ssk, k6, k2tog (16 stitches)
Row 69: ssk, k4, k2tog, ssk, k4, k2tog (12 stitches)
Row 70: ssk, k2, k2tog, ssk, k2, k2tog (8 stitches)

Cut yarn leaving about a 10” tail. Seam shut with Kitchener stitch. Weave in ends

Falling Leaves Mittens by Kathy Lewinski



Copyright 2014 Kathy Lewinski JustCraftyEnough.com
Do not duplicate for distribution, repost, sell or teach without permission.

